

CENGRS
Since 1990



CENGRS GEOTECHNICA PVT. LTD.

Soil and Foundation Experts



TABLE OF CONTENT

S.No.	Content	Page No.
1.	Our Introduction	04
2.	Our Commitment	05
3.	Our Activites	06
4.	Organizational Detail	07
5.	Our Directors & Company Divisions	08
6.	Company Policies	08
7.	Prequalification & Registration	10
8.	Geotechnical Investigation	14
9.	Topographical Surveys	32
10.	Ground Improvement	32
11.	Pile Foundation	33
12.	Foundation Testing	34
13.	Certificate of MSMED Registration	35
14.	Certificate of Registration ISO 9001:2008	35
15.	Certificate of Registration	35
16.	Financial statement	36
17.	List of key Personnel	37
18.	Bio-Data of Key Personnel	39
19.	Papers/Articles Published	42-44
20.	List of Field Equipments-Soil Investigation	45
21.	List of Field Equipments-Foundation Construction & Testing	46
22.	List of Laboratory Equipments	47-48
23.	List of Equipments For Topographic Survey Works	49
24.	Organization chart	49



INTRODUCTION

CENGRS is one of the leading Geotechnical Engineering Consulting firms in India. Established in 1990, and led by a team of IIT Delhi graduates, we have successfully completed over 5000 projects across India and abroad. During this time, we have grown from a small startup to a professional organization employing a staff of over 150 persons.

We have established our reputation as a company committed to providing engineering solutions to complex geotechnical problems as well as developing economic and safe designs for foundations and soil-related problems. Our project line-up includes major thermal power plants and solar power plants, refineries, bridges & highways, commercial & residential infrastructure, metro & railways, etc.

On behalf of the Cengrs family, we look forward to our business association, and hope to work with you soon.



OUR COMMITMENT



Our commitment to excellence in geotechnical engineering is reflected in the quality of our works. Our directors have published several articles and papers in technical magazines, journals and conferences. These publications describe the technical excellence achieved by our company and our contribution to advancing the state-of-the art in geotechnical engineering.

We are represented in national forums such as Indian Geotechnical Society, Association of Consulting Civil Engineers, Indian Roads Congress, Indian Society of Rock Mechanics & Tunneling Technology, and Consulting Engineers Association of India. Our directors have served these forums and their local chapters in various capacities. Our directors are also on the board of several Bureau of Indian Standard (BIS), Indian Road Congress (IRC) and National Building Code Committees where they are helping set the standards for future engineering practice.

Cengrs is regularly involved in organizing several workshops, seminars and conferences, aimed at promoting knowledge sharing and dissemination.





OUR ACTIVITIES

Our field of specialization is “Geotechnical Engineering”, which includes soil mechanics, rock mechanics, foundation engineering, pile foundations, soil improvement, foundation strengthening, foundation testing, etc.

We have the capability to carry out various geotechnical works; including:-

1. Geotechnical Investigations

- Geological Appraisal of Sites
- Soil Borings & Rock Drilling
- Static & Dynamic Cone Penetration Test
- Pressuremeter Test
- Static & Cyclic Plate Load Test
- Full Scale Pump Out Test
- Field Permeability & Percolation Test
- In-situ Vane Shear Test
- Block Vibration Test

2. Geophysical Investigations

- Cross-hole Seismic Test (CHST)
- Down-hole Seismic Test (DHST)
- Electrical Resistivity Test (ERT)
- Seismic Refraction Test (SRT)
- Parallel Seismic Test (PS)
- Spectral Analysis of Surface Waves (SASW)

3. Laboratory Testing of Soil and Rock (NABL / ISO:17025 accredited Laboratory)

- NABL / ISO:17025 accredited central Laboratory in Noida (U.P.)
- Ability to establish mobile / project laboratories

4. Topographic & Hydrographic Surveys

5. Foundation Construction & Ground Improvement

- Bored Piles upto 1.5 m diameter
- Under-reamed Piles
- Contiguous Piles
- Stone Columns / Gravel Piles
- Foundation Strengthening
- Pressure Grouting
- Deep Dynamic Compaction

6. Foundation Testing

- Static & Cyclic Pile Load Test
- High-strain Dynamic Pile Load Test
- Low-strain Pile Integrity tests
- Cross-Hole Sonic Logging(CHUM)
- Instrumented Pile Load Test
- Anchor Pullout Tests

7. Geotechnical Engineering Consultancy

- Geotechnical Assessment and Report
- Mitigating Foundation Distress
- Ground Improvement Works
- Forensic / Post-Failure Studies
- Design of Retaining Structures
- Slope Stability Analysis
- Liquefaction Analysis
- Hardstand Design
- Numerical Methods (FD, FEM)

ORGANISATION DETAILS

Name of the Organization	: Cengrs Geotechnica Private Limited
Address of Registered Office	: B-3/87, Safdarjung Enclave, New Delhi-110029.
Corporate Office	: A-100, Sector-63, Noida-201309 (UP)
Telephone	: 0120-4206771
Fax Number	: 0120-4206775
E-mail	: cengrs@gmail.com
Website	: www.cengrs.com
Name(s) of the contact person(s)	: Sanjay Gupta (Managing Director) Ravi Sundaram (Director) Sorabh Gupta (Vice President)
The firm is a proprietary / partnership / Limited Co. / society	: Private Limited Company
Year of Establishment of the Organization	: 26.06.1990 Incorporate under Registrar of Companies Delhi & Haryana. [Regn. No.55-40605 of 1990-91]
Details of Promoters	: Sanjay Gupta, Managing (Director) Ravi Sundaram, (Director)
Bankers	: Punjab National Bank ICICI Bank Limited Citibank NA
Income Tax - PAN No.	: AAACC0043N
Service Tax Registration No	: AAACC0043N-ST001
Tax Payer Identification Number(TIN)	: 09865704571
CIN No.	: U74899DL1990PTC040605
MSME Registration No.	: 090102208586 Part-II / 2014 UAN No. UP28E0000133
NABL Accreditation Regn.No	: ISO / IEC 17025:2005 (Valid upto 22.04.2018)
ISO Registration No.	: 16QAV11 (Valid upto 27/12/2019)



OUR DIRECTORS



Mr. Sanjay Gupta
Managing Director

Started the 'Fengrs' Group in 1983 and "Cengrs Geotechnica Pvt. Ltd." in 1990. A post graduate in Geotechnical Engineering with 46 years of experience, he is widely respected as one of the top Geotechnical Engineers in the country. Mr. Gupta has executed major projects of soil investigation, pile foundations and ground improvement across the country. He is the key person in the company and controls all technical, contractual, financial and commercial matters.



Mr. Ravi Sundaram
Director

The company's other founder, is a post graduate in Geotechnical Engineering with 35 years experience in site investigations, pile foundations and ground improvement in India and the Middle East. His international experience includes offshore soil investigations and offshore driven piles. He is in charge of the engineering services as well as site activities and directs all technical and commercial activities.

The directors are the key personnel in the company who are responsible for all activities of the company. The routine activities

are coordinated through a team of project managers and field engineers/geologists. Field work is executed by a team of experienced engineers, technicians and supervisors.

The soil and rock samples collected are tested in our laboratory at Noida (U.P.), which is manned by experienced technicians and engineers. Engineering studies are directly controlled by the directors for technical content and presentation style. The analysis is performed by qualified engineers who are well versed with foundation and geotechnical studies.

COMPANY POLICIES

We at Cengrs Geotechnica Private Limited are committed to providing quality services in the field of Civil and Geotechnical Engineering.

Our quality policy is as follows:

1. We provide to our customers, services conforming, at all times, to clearly established standards and project requirements. We commit ourselves, as a corporate body and as individuals, to do it right the first time, every time.
2. The management is committed to:
 - Implementing ISO 9001: 2008 Quality Management System,
 - Achieving and maintaining the highest standards of quality by continual improvement of its processes and quality of service, and
 - Gain customer confidence through quality in all spheres of our activities.
3. To achieve these objectives, we create a working environment that encourages our personnel to ensure quality of work and to prevent defects.
4. This policy and its objectives shall be reviewed at Management Review Meetings to ensure continuing suitability.

HEALTHY, SAFETY & ENVIRONMENTAL POLICY

Cengrs Geotechnica Private Limited is committed to provide a healthy and safe environment for all people at each work location on sites and office and to protect the environment in accordance with applicable laws and this HSE Policy. We are committed to preventing all accidents. In order to achieve this objective, we shall identify HSE risks arising from our activities and reduce them to as low as is reasonably practicable.

Successfully managing HSE issues is an essential component of our business strategy. By observing this policy and encouraging our workers to implement this policy, we work towards protecting the environment and the overall well-being of all our stakeholders, specifically, our employees, clients and sub-contractors.

Cengrs management shall take a proactive approach towards creating safe working environment for all employees and will be accountable for promoting continued safety education and training, assigning responsibility for all aspects of the HSE Policy, continuously reviewing potential areas of improvement, and ensuring through evaluation of incidents.

Cengrs will continue to address the environment and health impact of our operations by reducing waste, emissions, and discharges and by using energy efficiently. We strive to be good citizens of India.



PREQUALIFICATION AND REGISTRATION

We are pre-qualified / registered with various government departments, public sector organizations and major private companies as an experienced and qualified geotechnical consultant / contractor. Some of the organizations with which we are pre-qualified are as follows:

- [Ministry of Road Transportation & Highway \(MORTH\)](#)
- [NTPC Limited](#)
- [Engineers India Limited \(EIL\)](#)
- [Delhi Development Authority \(DDA\)](#)
- [Toyo Engineering India Limited \(TEIL\)](#)
- [Hindustan Construction Company Limited \(HCCL\)](#)
- [Bharat Heavy Electrical Limited \(BHEL\)](#)
- [Delhi Metro Rail Corporation Limited \(DMRC\)](#)

Please click on the links above to view our registration details.

CLIENTELE

GOVERNMENT SECTOR :

- Ministry of Head Transportation & Highway
- Department of Telecommunications.
- Central Public Works Department
- Rajasthan Irrigation Department.
- UP Irrigation Department
- Rajasthan State Electricity Board
- Rajasthan P.W.D.
- Delhi PWD
- Archaeological Survey of India (ASI)
- Railways.
- Delhi Development Authority.
- Military Engineers Services.
- Kandla Port Trust.
- Tuticorin Port Trust.
- Visakhapatnam Port Trust.
- The Anandpur Sahib Foundation
- Delhi Metro Rail Corporation Ltd.
- Defence Research & Development Organization (DRDO)
- Heavy Water Board
- Andaman Lakshadweep Harbour Works (ALHW)

PUBLIC SECTOR UNDERTAKING (PSU):

- NTPC Limited
- Gas Authority of India Limited.
- Indraprastha Gas Limited
- Engineers India Limited.
- Bharat Heavy Electricals Limited
- Indian Oil Corporation Limited.
- Hindustan Petroleum Corporation Ltd.
- Bharat Petroleum Corporation Ltd.
- Gujarat State Petroleum Corpn.Ltd.
- Guru Gobind Singh Refineries Ltd.
- Balmer Lawrie & Co. Ltd.
- RITES Limited
- Power Grid Corporation of India Ltd.
- Projects & Development India Ltd.
- Engineering Projects (India) Limited
- Nuclear Power Corporation of India Ltd.
- Steel Authority of India Limited
 - Durgapur Steel Plant
 - Bhilai Steel Plant
- NBCC Limited
- HSCC (India) Ltd.
- Rashtriya Ispath Nigam Limited (Vishakapatnam Steel Plant)

PRIVATE SECTOR :

- Reliance Energy Limited
- Lanco Infratech Limited
- Adani Power Maharashtra Pvt.Ltd.
- BGR Energy (India) Ltd.
- Larsen & Toubro Ltd. (ECC Divn.)
- Larsen & Toubro Ltd. (Power Divn.)
- Business Unit
- Punj Llyod Limited
- GVK Power Limited
- Torrent Energy Limited
- GMR Infrastructure Limited
- Jagatjit Cotton Textiles Limited.
- JCT Electronics Limited
- Raymond's Synthetics Limited
- Ranbaxy Laboratories Limited
- UB Engineering Ltd.
- Bridge & Roof Co. (India) Limited.
- Thermax Limited
- Jindal Strips Limited
- Jindal Power Limited
- Jindal Steel & Power Ltd.
- Jindal Saw Limited
- Monnet Power Limited
- Bennet & Coleman Co.Ltd. (Times of India)
- IREO Management Pvt.Ltd.
- Hindustan Construction Co.Ltd.
- Shree Cement Limited
- Mitsui Kensetsu India Pvt.Ltd.
- Gammon India Ltd.
- Unitech Limited
- G.R.Engineering Works Limited
- DLF Universal Ltd.
- Ansal Properties & Industries Ltd.
- Hindustan Brown Boveri Limited
- Tata Cummins Pvt.Ltd.
- BSC - RBM Patti (JV)
- Abir Infrastructure Pvt.Ltd.
- Amrapali Group
- JMC Projects (India) Ltd.
- Stup Consultants Limited
- Lanco Infratech Limited
- Bhushan Steel Limited
- Alstom TSD India Ltd.
- Technip KT (India) Pvt.Ltd.
- Jaypee Ventures Pvt.Ltd
- DLF Limited
- Welspun Energy Pvt. Ltd.
- SRF Limited
- Hindalco Industries Ltd.
- Saint-Gobain Glass India Ltd

ENGINEERING CONSULTANCY ORGANISATIONS / ARCHITECTS :

- Metallurgical & Engineering Consul-tants (India) Limited (MECON)
- M.N. Dastur & Co.Pvt.Ltd.
- Development Consultants Limited.
- Consulting Engineering Services (India) Ltd.
- Desein Private Limited
- Indure Private Limited
- FITCHNER Consulting Engineers(I) P.Ltd.t
- Krebs & Cie India Limited.
- Udhe India Limited.
- Davy Powergas India Limited.
- Kothari & Associates Private Ltd.
- Tata Consulting Engineers Pvt. Ltd.
- STUP Consutats Pvt Ltd.
- Tata Projects Limited
- G.D. Techno Private Limited.
- International Development and Engineering Associates Limited.
- International Design Engineering Associates Limited
- Stein Mani Chowfla
- Tandon Consultants Pvt.Ltd.
- Triune Projects Pvt.Ltd.
- Humphreys & Glasgow Consultants Pvt.Ltd.
- Mahendra Raj ConsultantsPvt.Ltd.
- C.P. Kukreja Associates Pvt.Ltd.
- ICT Private Limited
- Gherzi Eastern Limited
- EGIS Consulting Engineers



REAL ESTATE DEVELOPERS

- Raheja Developers Limited
- Unitech Limited
- Brajbhumi Nirmaan Pvt. Ltd.
- Three C Universal Developers Pvt. Ltd.
- IREO Private Limited
- Decathlon Sports India (P) Ltd.
- Emaar MGF Land Limited
- SDS Infratech Pvt. Ltd.
- DLF Limited
- One Leaf Buildtech LLP
- Terra Group
- Pan Realtors Pvt.Ltd.
- Omaxe Ltd.
- Solitaire Realinfra Pvt. Ltd.
- StrongPlant Infrastructure Private Limited
- Ruchira Group Pvt. Ltd.
- Victoryone Infraprojects Pvt. Ltd.
- Regal Emporia Infratech Private Limited
- Cloud 9 Projects Pvt. Ltd.
- Vertical Limits Infratech Private Limited
- Ahinsha Builders Private Limited
- Asmara Apparels India Pvt. Ltd.
- TPSC (India) Pvt. Ltd.
- Enchant Infrastructure Pvt. Ltd.
- Spire Techpark Pvt. Ltd.
- Amrapali Group
- Suneja Towers Private Limited
- Paras Buildtech India Private Limited
- Mark Buildtech Pvt. Ltd.
- Sky Earth Developers Pvt. Ltd.
- Three Platinum Softech Pvt. Ltd.
- JSM Devcons Pvt. Ltd.
- Dreamhome Infrastructure Pvt. Ltd.
- Indiabulls Real Estate Limited
- Pioneer Urban Land & Infrastructure Ltd.
- Sikka Group
- Athena Infrastructure Ltd.
- YG Reality Private Limited
- Sobha Limited
- DLF New Gurgaon Homes Developers Pvt. Ltd.
- SVS Buildcon Pvt. Ltd.
- Gopal Global Developers Pvt. Ltd.
- Pan Realtors Pvt. Ltd.
- Ultra Home Construction Pvt. Ltd.
- DSR Realtors Pvt. Ltd.
- Standard Farms Pvt. Ltd.
- Taneja Associates Pvt. Ltd.
- VAR Realtors Pvt. Ltd.
- Sare Saamag Reality Pvt. Ltd.
- Impact Sare Magnum Townships Pvt. Ltd.
- Taneja Associates Pvt. Ltd.
- Orchid Infrastructure Developers Private Limited
- Aerens Kolmet Infrastructures Pvt.Ltd.
- Business Park Town Planners Ltd.
- Dehra Construction Pvt.Ltd
- Earthcon Vertical Limits Infracon Pvt. Ltd.
- Value Infra Group
- SMCC Construction India Ltd.
- Global C Inc
- Godrej Properties Limited
- Mahagun Real Estate Pvt. Ltd.
- Puri Construction Pvt. Ltd.
- Paarth Infrabuild Pvt. Ltd.
- Soorya Heiighcon Pvt. Ltd.
- Supertech Group
- Vatika Limited
- Bestech India Pvt. Ltd.
- Rudrabhishek Enterprises Pvt. Ltd.
- Brys International Pvt. Ltd.
- Ajnara India Limited
- Intellect Projects Pvt. Ltd.
- International Land Developers Pvt. Ltd
- Shipra Estate Pvt. Ltd...

INTERNATIONAL CLIENTS / CONSULTANTS

- Mitsui & Co., Japan.
- The Consortium of Yokogawa Architects & Engineers, Inc. and Daiichi Health Care Facility Consultants Inc.
- ENVIRONcorp Consulting Services (S) Pte.Ltd, Singapore
- ENVIRONcorp Consulting Services (M) Sdn. Bhd. Malaysia
- Dames & Moore, Singapore.
- Dames & Moore, Malaysia.
- BBC Brown Boveri (Hindustan Brown Boveri Limited).
- Cummins Engine Co. Inc. U.S.A.
- Mitsubishi Heavy Industries, Japan.
- Kevin Roche John Dinkeloo and Associates, U.S.A.
- Pacific Consultants International, Japan.
- Tokyo Electric Power Services Co. Ltd. Japan in association with Tata Consulting Engineers, Bombay.
- Energy Developments Limited, Australia.
- Through: EDL Power (India) Pvt.Ltd, New Delhi.
- BHP Steel, Australia
- Through : BHP Steel India
- Hyundai Heavy Industries Co.Ltd., South Korea.
- Through: Punj Lloyd Limited, New Delhi
- Tata Cummins Pvt.Ltd.
- BSC – RBM Patti (JV), Malaysia
- EDL Power (India) Pvt.Ltd.
- SNC Lavalin Inc., Canada
- Sverdrup Civil Inc., USA
- Kumagai-Skanska-HCC-Itochu Group (KSHI JV)
- China Coal Construction Group Corpn.
- PATI-BEL JV
- International Metro Civil Contractors (IMCC)
- DYWIDAG-L&T-SAMSUNG-IRCON-SHIMIZU
- Japan International Consultants forTransportation Co. Ltd. (JICA)
- Nippon Koei India Pvt. Ltd.



PROJECT EXPERIENCE

We have country-wide experience in executing major Geotechnical Investigation and Pile Foundation works. Some major projects executed by us are listed below:

GEOTECHNICAL INVESTIGATIONS

Metro

NAME OF PROJECTS	CLIENT
Geotechnical Investigation for Tunnel by Shield TBM & ITO, Delhi Gate & Jama Masjid Stations between Mandi House & Jama Masjid under Delhi MRTS Project, Phase-III (DMRC)	Metro Tunnelling Delhi
Geotechnical Investigation for Construction of Viaduct and Elevated Stations at Sector-34, 52, 61, 59, 62 and Electronic City in Noida (CC-94), Line III Extension of Phase-III Delhi MRTS Project	YFC Projects Private Limited
Confirmatory Geotechnical Investigation for Proposed Noida Metro Project at Noida, Uttar Pradesh	CEC International Corporation India Pvt. Ltd.
Geotechnical Investigation for C/o In-situ balance Cantilever over Railway Crossing near Ernakulam South Railway Station	Delhi Metro Rail Corporation Limited (Kochi Metro Rail Project)
Geotechnical Investigation for DMRC Phase-III Project between Mandi House to Jama Masjid (CC-05 Contract)	Delhi Metro Rail Corporation Limited
Confirmatory borehole work at Ashram Chowk and Sarai Kale Khan to Nizamuddin Station for DMRC Project CC-24	J. Kumar Infraprojects Ltd.
Geotechnical Investigation for Near Khooni Darwaza Monument and Delhi Gate Monument along the Tunnel Alignment of DMRC Project (CC-05)	Metro Tunnelling Delhi
(L&T SUCG JV)	Pratibha Industries Limited
Geotechnical Investigation for DMRC Corridor Project at Nehru Place Station (UG)-CC23	Pratibha Industries Limited
Geotechnical Investigation for DMRC Corridor Project Between Kalkaji and Hauz Khas Stations(UG)-CC-23	Pratibha Industries Limited
Geotechnical Investigation for Airport Metro Express Line (Tunnel) in T-3 Approach Road, Delhi Airport	Delhi Metro Rail Corporation (DMRC)
Geotechnical Investigation for Proposed Structures for Railway Siding of KWPCCL near Raigarh, Chhittigarh	Avantha Power & Infrastructure Limited
Geotechnical Investigation for DMRC Corridor Project Between Shankar Vihar and Munirka Stations (UG) CC-27	Larsen & Toubro Ltd.,
SUCG-JV-CC27	Larsen & Toubro Limited
Geotechnical Investigation for Proposed Metro Stations at ITO, Delhi Gate & Jama Masjid	Larsen & Toubro Limited
Pressuremeter Tests along Tunnel from Mandi House to ITO, Delhi Gate & Jama Masjid (UG-CC-05)	Larsen & Toubro Limited

Metro

NAME OF PROJECTS	CLIENT
Geotechnical Investigation for DMRC project at Badarpur-Faridabad Route	Lanco Infratech Limited
Geotechnical Investigation for Proposed Elevated DMRC Corridor Project from Moti Bagh to Delhi Cantt Via Dhaula Kuan(CC-17)	Larsen & Toubro Limited
Geotechnical Investigation for DMRC Corridor Project Between Moti Bagh and Lajpat Nagar Stations(UG)-CC18	FEMC-Pratibha JV
Geotechnical Investigation for New Faridabad Station for DMRC Project	Lanco Infratech Limited
Geotechnical Investigation for Jama Masjid & Kashmere Gate for UG Works under Delhi MRTS Project of Ph-III	Era Infra Engineering Limited
Geotechnical Investigation for Proposed Sarai Metro Station for DMRC Project - CC-16	MBL Infrastructures Limited
Geotechnical Investigation for DMRC Project-CC-27 (UG-2) Phase-III	Larsen & Toubro Limited
DMRC Project-CC-27 (UG-2) Phase-III	L&T - SCUG JV CC27 DELHI
Geotechnical Investigations for Chennai Metro Rail Project Phase-I (Underground Package Uaa-04)	Metro Tunneling Chennai
Design and Construction of Under-Ground Stations at Shenoy Nagar Anna Nagar East, Anna Nagar Tower Thirumangalam and Associated Tunnels : UAA-05	Transtunnelstroy - Afcons Joint Venture
Geotechnical Investigation for Tunnel Between Central Secretariat and Mandi House for Underground Works Under Delhi MRTS Project (BC-45)	Pratibha-CRFG JV
Geotechnical Investigation for Under Ground Tunnel at Delhi (Package CMC1) of Delhi Mass Rapid Transport System (MRTS)	Larsen & Toubro Limited
Drilling of boreholes for the Installation of Inclinator/ Extensometer along monitoring line ML-11 near Sarvapriya Vihar club at 4 No.locations at Hauz Khas Station and Malviya Nagar Station	Metro Tunneling Group
Geotechnical Investigation for Delhi Metro Project (Phase-III)-BC 20 Contract : Metro Tunnel Alignment between green park and saket including stations Hauz Khas and Malviya Nagar	Metro Tunneling Group
Geotechnical Investigation for Delhi Metro Project (Phase-III)-BC 20 Contract : Metro Tunnel Alignment to construct viaduct and three elevated Stations at Chhattarpur Ghitorni and Arjungarh on Qutab Minar Gurgaon Corridor	Simplex Infrastructures Ltd.
Geotechnical Investigation for DMRC Mass Rapid Transport System Airport Metro Line (AMEL-C5) Project New Delhi	Larsen & Toubro Limited
Geotechnical Investigation for Qutab Minar-Gurgaon Corridor of Phase-II of Delhi MRTS Project (Contract BC-20)	Simplex Infrastructures Ltd.
Geotechnical Investigation for DMRC Extension of Line No.3 From Barakhamba Road to Indraprastha Estate New Delhi	Consulting Engineering Services (I) Private Limited
Geotechnical Investigation for Delhi Metro Rail Project Under Contract MC-1A	KSHI JV
Geotechnical Investigation for DMRC - Seelampur Station, New Delhi	Delhi Metro Rail Corporation Ltd.



Railways

NAME OF PROJECTS	CLIENT
Geotechnical Investigation for Dedicated Freight Corridor Project (Western Corridor Phase-2) Package CT P-15B Special Steel Bridges, Narmada River, Bharuch, Gujarat	Larsen & Toubro Limited
Geotechnical Investigation for Viatarana-Sachin Section (Package 12) of Western Dedicated Freight Corridor Phase-2- Sections 2 and 3 from Ch. 1.038 kms to Ch. 93 kms. in Gujarat	Stup Consultants Private Limited
Geotechnical Investigation for New Karchana Station (Excluding) - New Bhaupur Station (Excluding) of Eastern Dedicated Freight Corridor Project (Contract Page 202D from Ch.457+000 to Ch. 507+694)	GMR Infrastrucure Limited
Geotechnical Investigation for Mumbai-Ahmedabad High speed Railway Corridor	Japan International Consultants for Transportation Co.Ltd
Geotechnical Investigation for ROB locations for Kaithal-Rajasthan/Haryana Border Section of NH-65	URS Scott Wilson India Private Limited
Geotechnical Investigation for Proposed ROB Locations for Aligarh-Moradabad Section of NH-93, Uttar Pradesh	URS Scott Wilson India Private Limited
Geotechnical Investigation for Proposed Design-Build_Lumpsum basis for Bhaupur-Khurja Section of Eastern Dedicated Freight Corridor (DFCC) -LOT-101 (Uttar Pradesh)	Stup Consultants Private Limited
Geotechnical Investigation for Eastern DFCC Project (Bhaupur-Khurja), Uttar Pradesh	Larsen & Toubro Limited
Geotechnical Investigation for Dedicated Freight Corridor (Western Freight Corridor from Dadri-Rewari to Vadodara-JNPT Section), Maharashtra & Gujarat	NK Consortium Phase-2
Geotechnical Investigation for Railway Under Bridge Aat Railway Crossing No.7 Between Shalimar Bagh and Azadpur Fruit Mandi, Delhi	Tandon Consultants Pvt. Ltd.
Geotechnical Investigation for Construction of Railway Bridge Across Yamuna River Near Shastri Park, Delhi	Larsen & Toubro Limited

Bridges & Highways

NAME OF PROJECTS	CLIENT
Geotechnical Investigation of Structures for Rewa-Katni_Jabalpur Road Project - Pkg-II: Maihar-Slimanabad, Section of NH-7	Larsen & Toubro Limited
Geotechnical Investigation for Four Laning of Chandigarh-Kharar Section from Sector-39 at Chandigarh to Kharar of NH-21 & NH-95, Punjab	B&S Egnineering Consultants Private Limited
Geotechnical Investigation for Four Laning of Yamunanagar Panchkula Section of NH-73 (Package-2: Km. 115.400 to Km 157.192) in the State of Haryana	Sadbhav Engineering Limited
Geological, Geotechnical and Topographical Survey for Road Network Improvement in North-East States of India (NH-54) from Aizawl to Tuipang in Mizoram State	Nippon Koei India Pvt. Ltd.
Sub-Soil Investigation for Muzzaffarnagar-Saharanpur Road Project, Uttar Pradesh	B&S Egnineering Consultants Private Limited
Geotechnical Investigation for 6 Laning of Km 192.00 to km 198.00 between Vadodara-Surat of NH-8 including c/o A New 4-Lanes Extradosed Bridge Across River Narmada in Gujarat	Larsen & Toubro Limited

Bridges & Highways

NAME OF PROJECTS	CLIENT
Geotechnical Investigation for Sharda Bridge & Structures on both side Approaches at Pachperi Ghat, Lakhimpur, Uttar Pradesh	EGIS India Consulting Engineers Private Limited
Geotechnical Investigation for NH-15 from Km 103 at Amritsar to Km 399 at Sri Ganganagar	ICT Private Limited
Geotechnical Investigation for 6 Laning of Km 192.00 to km 198.00 between Vadodara-Surat of NH-8 including c/o A New 4-Lanes Extradosed Bridge Across River Narmada in Gujarat	Larsen & Toubro Limited
Geotechnical Investigation for Proposed Flyover at NH-24 & NH-58, Ghaziabad	ITD Cementation Limited
Geotechnical Investigation for Compressive Development of Corridor (Outer Ring Road) between Mukarba Chowk to Wazirabad Chowk	CEC International Corporation India Pvt. Ltd.
Geotechnical Investigation for Dedicated Freight Corridor Project (DFCC Western Corridor CTP-1 & 2 Project) from Rewari, Haryana to Iqbalgarh, Gujarat	Larsen & Toubro Limited
Geotechnical Investigation for Proposed Design-Build_Lumpsum basis for Bhaupur-Khurja Section of Eastern Dedicated Freight Corridor (DFCC) -LOT-101 (Uttar Pradesh)	Stup Consultants Private Limited
Geotechnical Investigation for Katihar-Sonaili-Barsoi_Balrampur Section of SH-98 from km. 0+000 to km 65+100, Package-VIII in Bihar	EGIS India Consulting Engineers Private Limited
Geotechnical Investigation for Eastern DFCC Project (Bhaupur-Khurja), U.P	Larsen & Toubro Limited
Geotechnical Investigation for Rampur-Kathgodam Highway Project	Era Infrastructure (I) Limited
Geotechnical Investigation for 6 Laning of Km 192.00 to km 198.00 between Vadodara-Surat of NH-8 including c/o A New 4-Lanes Extradosed Bridge Across River Narmada in Gujarat under NHDP Phase-V	Hindustan Construction Co. Limited
Geotechnical Investigation for 2-Lane with Pave Shoulders of Bhopal Sanchi Section from Km 0.00 to 53.775 of NH-86	Bhopal Sanchi Highways Private Limited
Geotechnical Investigation for Doubling of Bina-Guna (Pkg-I) & Kota-Ruthiyai (Pkg-II)	URS Scott Wilson India Private Limited
Geotechnical Investigation for Determination of Compaction of Compacted Earth Embankment Layers on Yamuna Expressway Project	Jaiprakash Associates Limited
Geotechnical Investigation for Four Laning of Rohtak-Panipat Section From Km 0+000 (Km 63.300 of NH-10) to Km 80+858 (Km 83.500 of NH-1) in the State of Haryana under NHDP Phase-IIIB on DBFOT Basis of NH-71A	Stup Consultants Private Limited
Geotechnical Investigation for Proposed Four-Laning of Muzaffarnagar-Haridwar-Dehradun on National Highway-58 & 72	Era Infra Engineering Limited
Geotechnical investigation for Bridges / structures and high embankments for Bridges and Structures on Amritsar to Sri Ganganagar Section of NH-15 in Punjab & Rajasthan	Intercontinental Consultants & Technocrats Pvt. Ltd.
Geotechnical Investigation for Indo-Nepal Border-Varanasi Section on NH-233 (UP)	Intercontinental Consultants & Technocrats Pvt. Ltd.
Geotechnical Investigation for Proposed 4/6 Laning of Ludhiana (KM 85+980) - Talwandi (KM 170+000) of NH-95	Gherzi Eastern Limited
Geotechnical Investigation for Proposed 6 Laning of Gurgaon-Jaipur Section of NH-8 from Km 42.7 to Km 107.0 in the State of Haryana	Lea Associates South Asia Pvt. Ltd.
Geotechnical Investigation for C/O Elevated Expressway at Badarpur on NH-2 at Delhi-Haryana Border	Hindustan Construction Co. Limited



NAME OF PROJECTS	CLIENT
Geotechnical Investigation for Ganga Expressway Project (Greater Noida to Fategarh-Pkg-1)	Jaypee Ventures Pvt. Ltd.
Geotechnical Investigation For Construction of East-West Corridor Phase 1-A, Connecting Ring Road Near Railway Feeder Line Crossing Adjacent To Who Office to East Delhi (NH-24 Bye-Pass/Marginal Bund Road)	B & S Engineering Consultants Pvt. Ltd.
Geotechnical Investigation for Bridges and Structures for 4/6 Laning of Beawar-Pali-Pindwara Section of NH-14 from Km. 0.0 to Km. 244.0 in Rajasthan	Intercontinental Consultants & Technocrats Pvt. Ltd.
Geotechnical Investigation for Bridge & Road Projects In The State of Punjab (DAKHA – RAIKOT – BARNALA)	Rohan Rajdeep Tollways Limited
Geotechnical Investigation for Bridges for Gorakhpur Bypass Project From Km 0 To Km 32.27 of NH-28 (U.P.)	Gammon India Limited
Geotechnical Investigation for construction of Bridge and its Approaches Over River Yamuna Down Stream of Existing Bridge at Wazirabad, Delhi	Tandon Consultants Pvt. Ltd.
Geotechnical Investigation for Bridge & Road Projects in the State of Punjab	Rohan Rajdeep Tollways Limited
Geotechnical Investigation for Construction of Grade Separator at Mukarba Chowk, Delhi	Tandon Consultants Pvt. Ltd.
Confirmatory boreholes for four laning of NH-25 in Jhansi (contract package MP / UP-1)	Oriental Structural Engineers Pvt. Ltd.
Geotechnical Investigation for Construction of Bridges, Flyovers and ROB In Rj-10 Project Rajasthan	KMC Constructions Ltd.
Geotechnical Investigation for Proposed Bridges and Embankments From km 225 to km 255 of NH-31C in The State of West Bengal	Intercontinental Consultants & Technocrats Pvt. Ltd.
Geotechnical Investigation for Detailed Engineering of 4/6 laning of Lucknow-Ayodhya Section of NH-28 Including Faizabad Bypass	Consulting Engineering Services (I) Private Limited
Geotechnical Investigation for Kanpur Bypass Connecting NH-25 to Bhognipur on NH-2, (Phase-III North South and East West Corridor) and Jajmau to Ramadevi (km 75 to 80) of NH-25	Craphts Consultants (I) Private Limited
Geotechnical Investigation for Upgradation of Ahmedabad-Mumbai Section km 91/5 to km 263/00 on NH-8	Lea Associates South Asia Pvt. Ltd.
Geotechnical Investigation for Four Laning and Strengthening of Jhansi to Bhognipur Junction of NH-2 section of NH-25 including Kalpi Bridge on River Yamuna	EMA Unihorn (India) Pvt. Ltd.
Confirmatory Geotechnical Investigation for Bridge Across River Rawason at Haridwar	Madhava Hytech Engineers Pvt. Ltd.
Geotechnical Investigation for 4/6 Lane Corridor from Meerut to UP / Uttaranchal Border Section of NH-58 from Km 52/250 To 152/000	Lea Associates South Asia Pvt. Ltd.
Geotechnical Investigation for 4 Laning of Gorakhpur Bypass Including Rapti Bridge	Consulting Engineering Services (I) Private Limited
Geotechnical Investigation for DPR for Up-gradation of Kishangarh-Nasirabad-Bhilwara-Chittorgarh-Udaipur Section of NH-8, NH-79 and NH-76 in the State of Rajasthan (Package-III)	Sverdrup Civil Inc.
Geotechnical Investigation for Bridges Along Chandigarh-Ropar-Kiratpur Section of NH-21	Consulting Engineering Services (I) Private Limited

GEOTECHNICAL INVESTIGATIONS

High-Rise Buildings

NAME OF PROJECTS	CLIENT
Geotechnical Investigation for Proposed Residential High Rise Group Housing Project "ADVENTZ PLAZA" at Kamla Nagar, New Delhi	Texmaco Infrastructure & Holdings Ltd.
Geotechnical Investigation Works for BRYS BUZZ Project in Sector-150 Noida, Uttar Pradesh	Brys International Pvt. Ltd.
Geotechnical Investigation for Proposed Group Housing Project (HSG021) at Sector-16, Gurgaon, Haryana	Vatika Limited
Geotechnical Investigation for Mixed Land Use, Development at Sector-94, Noida	Supertech Realtors Private Limited
Geotechnical Investigation for The Proposed North Wing North Eye Project, Sector-74, Noida Uttar Pradesh	Supertech Limited
Geotechnical Investigation for Construction of ORB of Capetown Sector-74, Noida (U.P.)	Supertech Limited
Geotechnical Investigation for Proposed "Mixed Use Building" at Plot No. C-1, Sector-44 Noida, Uttar Pradesh	B.E. Billimoria & Co. Limited
Geotechnical Investigation for Proposed "Ajnara Panorama" at Yamuna Expressway, Uttar Pradesh	Ajnara India Limited
Geotechnical Investigation for Proposed "Sikka Dream High" Project at Sector-143-B, Noida	Sikka Infrastructure Pvt. Ltd.
Geotechnical Investigation for Proposed Cricket Stadium Complex at Sports City, Sector-25, Yamuna Expressway, Dhankaur, Uttar Pradesh	JPSK Sports Pvt. Ltd.
Geotechnical Investigation for Proposed Hotel and Commercial Building at Sports SDZ, Dhankaur Greater Noida, Uttar Pradesh	JPSK Sports Pvt. Ltd.
Geotechnical Investigation for Proposed Icon Towers and other Facilities of F1 Race Track Project at Noida, Uttar Pradesh	JPSK Sports Pvt. Ltd.
Geotechnical Investigation for various projects including "Victor Valley and Grand Arch". at Gurgaon for M/s. IREO Management Pvt.Ltd. and various other projects	IREO Group
Geotechnical Investigation for Proposed Group Housing "Super Luxury Estate" at Sector-42 Phase-V, Gurgaon, Haryana	DLF Limited
Geotechnical Investigation for Proposed Upcoming Group Housing Project at Gwal Pahari, Gurgaon, Haryana	Paras Buildtech India Private Limited



Commercial & Residential

NAME OF PROJECTS	CLIENT
Geotechnical Investigation at Xpressions by Vatika (HSG028) at Sector-88B, Gurgaon (Haryana)	Vatika Limited
Hydrological Survey and Geotechnical Investigation for your Proposed Project at Alwar, Rajasthan	Shramik Awas Vikasak LLP
Conducting Plate Load Tests for Residential Building "Presidia" at Sector-62, Gurgaon, Haryana	Pioneer Urban Land & Infrastructure Ltd.
Geotechnical Investigation for Proposed Residential High Rise Group Housing Project "ADVENTZ PLAZA" at Kamla Nagar, New Delhi	Texmaco Infrastructure & Holdings Ltd.
Soil Investigation for Proposed Project "The Westerlies" at Sector-108, Gurgaon (Haryana)	Experion Developers Private Limited
Geotechnical Investigation for Proposed Project at Mandoal Vihar, Sector-7, Ghaziabad, (UP)	NCC Limited
Geotechnical Investigation for Proposed Shehnai Building at Indore, Madhya Pradesh	Skye Earth Developers Private Limited
Geotechnical Investigation for Proposed Commercial Complex at Leisure Valley, Greater Noida	Amrapali Leisure Valley Pvt. Ltd.
Geotechnical Investigation for SRCP Colony, Raipur, Chhattisgarh	Shree Cement Limited
Geotechnical Investigation for Proposed Project site at Sector-106, Noida, Uttar Pradesh	Viroma Infrastructrure Pvt. Ltd.
Geotechnical Investigation for Commercial Building in Phase-2 at "Primanti" at Fazilpur Jharsa, Sector-72, Gurgaon, Haryana	Tata Housing Development Company Limited
Soil Investigation at Vatika One India Next (COM011) at Sector-82A, Gurgaon (Haryana)	Vatika Limited
Soil Investigation Work for Proposed Sports Club Project At Golf Course," At Nh-24, Ghaziabad (U.P.)	LandCraft Recreations Pvt. Ltd.
Geotechnical Investigation for Proposed Project at Sector-150, Noida, Uttar Pradesh	. Lotus Green Construction Pvt. Ltd.
Geotechnical Investigation for Proposed Project at Sector-108, Gurgaon, Haryana	Sobha Limited
Geotechnical Investigation for Proposed Existing Airtel Building at Plot No. B 38/C-1, Sector-57, Noida	Srishti Project Consultants Pvt. Ltd.
Geotechnical Investigation at Ashapur, Varanasi, Uttar Pradesh	Ruda Real Estate Ltd.
Geotechnical Investigation for Project Smart Residential Community, Sector 43, Suraj Kund, Faridabad, Haryana	Bharti Land Limited
Geotechnical Investigation for The Lake at Omaxe Chandigarh Extension, Mullanpur, Punjab	Omaxe Chanigarh Extension Developers Pvt. Ltd.
Geotechnical Investigation for Multiplex (RET 012) Site at Sector-83, Vatika India Next, Gurgaon, Haryana	Vatika Limited
Geotechnical Investigation for the Proposed Omaxe City Centre at Faridabad, Haryana	Robust Buildwell Private Limited
Geotechnical Investigation for The Palace at Lucknow, Uttar Pradesh	Omaxe Limited

Commercial & Residential

NAME OF PROJECTS	CLIENT
Geotechnical Investigation for Omaxe Royal Residency at Bhiwadi, Rajasthan	Omaxe Limited
Geotechnical Investigation for Proposed Group Housing Project "GRAND OMAXE" at Gomti Nagar, Lucknow, Uttar Pradesh	Omaxe Limited
Geotechnical Investigation for Janeshwar Enclave, Khushi Road, Lucknow, Uttar Pradesh	NCC Limited
Geotechnical Investigation for Proposed Hotel & Service Apartments at Hazratganj, Lucknow, Uttar Pradesh	Omaxe Limited
Topographical Survey and Soil Investigation for your Proposed Project at Sector-150, Noida, (U.P)	Tata Value Homes Limited
Geotechnical Investigation for Proposed Multi Story Residential Complex "Ajnara Integrity" Raj Nagar Extension (Phase-II) at NH-58, Ghaziabad (UP)	Ajnara India Limited
Geotechnical Investigation for Royal Residency at Ludhiana, Punjab (Panache-II)	Omaxe Limited
Geotechnical Investigation for Proposed Building at Sector-60, Noida	General Clothiers Pvt. Ltd.
Geotechnical Investigation for Proposed Project at Sonipat Near Chokhi Dhani, Haryana	Boxtrans Logistics (India) Services Pvt. Ltd.
Geotechnical Investigation for Proposed Housing Project at Singhpur, Kanpur, Uttar Pradesh	Rudra Real Estate Ltd.
Soil Investigation for your Proposed Project at 81 High Street, Faridabad (Haryana)	Puri Constructions Private Limited
Soil Investigation for your Proposed "TULIP" Project at Lotus Greens, Greater Noida	Lotus Green Construction Pvt. Ltd.
Geotechnical Investigation for Construction of Type-V Quarters in Railway Officers Colony at Tilak Bridge, New Delhi	Fountainhead
Soil Investigation for Proposed Residential Building at Sector-116, Noida, Uttar Pradesh	Durga Charan Dash
Geotechnical Investigation for Proposed Project at Plot No.192 A, Sector-4, Phase-II, IMT Bawal, Haryana.	Brakes India Limited
Geotechnical & Topographical Survey for Proposed Group Housing Project at Agra, Uttar Pradesh	RDI Homes Pvt.Ltd.
Installation of Piezometer for Ireo Mix Used Commercial Project at Sector-61, Gurgaon (Haryana)	IREO Private Limited
Geotechnical Investigation for Proposed Greenwood Project at Phase-I, Plot No.01, Informal Sector Greater Noida (UP).	Greenwoods Govt. Officers Welfare Society
Geotechnical Investigation for Proposed Project at Golf Course at NH-24, Ghaziabad, Uttar Pradesh	Landcraft Recreations Pvt. Ltd.
Soil Investigation for Proposed Residential Group Housing Project at Sector-150, Noida	Godrej Properties Limited
Geotechnical Investigation for Proposed Project at Sector-79, Gurgaon, Haryana	Bestech India Pvt. Ltd.
Geotechnical Investigation for Ajnara City, SC02 Sports City, Greater Noida West	Ajnara India Limited



Commercial & Residential

NAME OF PROJECTS	CLIENT
Soil Investigation for Proposed Group Housing Project at NH-24, The Sapphire, Opp. Asia Columbia Hospital, Ghaziabad	Pavitra Conbuild Pvt. Ltd.
Geotechnical Investigation for Proposed Project at Sector-135, Noida, Uttar Pradesh	Divya Software Solutions Pvt. Ltd.
Conducting DCPTs for Residential Development (40 Acres) at Vrindavan, Mathura, Uttar Pradesh	Brajbhumi Nirmaan Private Limited
Soil Investigation for Lotus Boulevard Site at Greater Noida	Three C Universal Developers Pvt. Ltd.
Geotechnical investigation for Proposed Second Factory at Bawal, Gurgaon	Takenaka India Private Limited
Topographical Survey and Soil Investigation for Proposed Project on NH-58 Near Manandham Temple at Ghaziabad, Uttar Pradesh	Decathlon Sports India (P) Ltd.
Geotechnical Investigation for Proposed Project at Knowledge Park, Greater Noida	RITES Limited
Geotechnical Investigation for Proposed Capital Tower 1 & 2, Sector-26, Gurgaon (Haryana)	Emaar MGF Land Limited
Confirmatory Soil Investigation at Avadh Vihar Yojana, Mandakani Package, Lucknow, Uttar Pradesh	NCC Limited
Geotechnical Investigation for Proposed Group Housing Project for SDS Developers, Greater Noida	SDS Infratech Pvt. Ltd.
Confirmatory Soil Investigation at Avadh Vihar Yojana, Alaknanda Package, Lucknow, Uttar Pradesh	NCC Limited
Geotechnical Investigation for Group Housing Project for DLF at Plot No. 1&2 Najafgarh Indl. Area, New Delhi	DLF Limited
Geotechnical Investigation for Proposed Varona Height Project, Ph-II, Greater Noida (West), Uttar Pradesh	StrongPlant Infrastructure Private Limited
Soil Investigation for Group Housing Project at Hardoi Road, Lucknow (UP)	Earthcon Vertical Limits Infracon Pvt. Ltd.
Geotechnical Investigation for Group Housing Project at Lucknow, Uttar Pradesh	Paarth Infrabuild Pvt. Ltd.
Geotechnical Investigation for Proposed Ireo's Group Housing Project at Ludhiana, Punjab	Ireo Waterfront Private Limited
Geotechnical Investigation for Proposed Club Building at Township Project site in Meerut, (UP)	Rudrabhishek Enterprises Pvt. Ltd.
Geotechnical Investigation for Emerald Bay Phase-2 at Village Dhanwapur, Sector-104, Gurgaon, Haryana	Puri Constructions Pvt Ltd
Geotechnical, Topographical & Hydrological Survey at Plot No.DTA-003-002, Mahindra World City at NH-8, Jaipur, Rajasthan	Perto India Pvt. Ltd.
Geotechnical Investigation for Proposed Sohna Residential Project at Sector-33, Sohna Road, Gurgaon	International Land Developers Pvt. Ltd
Geotechnical Investigation for Proposed Project at Jaypee Sports City, Budha Circuit (Site-3) at Greater Noida	Larsen & Toubro Limited

Commercial & Residential

NAME OF PROJECTS	CLIENT
Geotechnical Investigation for Proposed Project "Regal Emporia" at Grater Noida	Regal Emporia Infratech Private Limited
Supervision of Pile Construction, Conducting Pile Load Tests, HSDLT & PIT for Lotus Especia, Ph-II, GH-02 at Sector-100, Noida	Cloud 9 Projects Pvt. Ltd.
Geotechnical Investigation for Proposed Residence at Farm 11, North Drive, Chhattarpur, New Delhi	Roshni Estates and Properties Private Limited
Topographical Survey and Geotechnical Investigation work at Faridabad (Haryana)	Decathlon Sports India (P) Ltd.
Topographical Survey and Geotechnical Investigation and for your Proposed Project at Sushant City, Ansal Golf Link, Shaheed Path Lucknow, Uttar Pradesh	Decathlon Sports India (P) Ltd.
Geotechnical Investigation for Proposed Spire Tech, IT Park, Tech Zone, Greater Noida	Spire Techpark Pvt. Ltd.
Geotechnical Investigation for Proposed Township at Sector 88-89, Faridabad, Haryana	Puri Constructions Pvt Ltd
Geotechnical Investigation for Proposed Group Housing Project at Sector-4A, Panchkula, Haryana	Ireo Five River Private Limited
Geotechnical Investigation for Proposed Project at Sector-71, Gurgaon	Unitech Limited
Geotechnical Investigation for Proposed "15.0 Acres-IT Park" at Badshahpur, Gurgaon	Unitech Limited
Geotechnical Investigation for Proposed "Ajnara Panorama" at Yamuna Expressway (UP)	Ajnara India Limited
Geotechnical Investigation for Proposed Project at Sector-88, Gurgaon	Bestech India Private Limited
Geotechnical Investigation for Hub, EWS, Hamlet & Housing Sites at Sector-99, Mohali, Punjab	Puma Realtors Private Limited
Geotechnical Investigation for Residential Development (38 Acres) at Vrindavan, Mathura, U.P.	Brajbhumi Nirmaan Private Limited
Geotechnical Investigation for Proposed Group Housing Project at Sector-67 A, Gurgaon, Haryana	Grace Realtech Pvt. Ltd
Geotechnical Investigation for Group Housing Project "Uniworld SPA-II" at Sector-69 Gurgaon, Haryana	Unitech Limited
Geotechnical Investigation for Group Housing Project "South Park" at Sector-70 Gurgaon, Haryana	Unitech Limited
Geotechnical Investigation for Nirvana Country-III at Sector-70 Gurgaon, Haryana	Unitech Limited
Geotechnical Investigation for Proposed Residential Complex "Pinnacle 'D' Desire" at Indore, Madhya Pradesh	JSM Devcons Pvt. Ltd.
Geotechnical Investigation for Proposed Residential Housing at Pioneer Park, Sector-62, Gurgaon, Haryana	Pioneer Urban Land & Infrastructure Ltd.
Geotechnical Investigation for Proposed Group Housing Project at Sector 110 at Village Pawala Khusrupur Gurgaon, Haryana	Athena Infrastructure Ltd.



Commercial & Residential

NAME OF PROJECTS	CLIENT
Geotechnical Investigation for Residential Housing Towers, G, H, J, K, L, M and N in Pioneer Park at Sector-61, Gurgaon, Haryana.	Pioneer Urban Land & Infrastructure Ltd.
Geotechnical Investigation for Proposed Low Cost Housing Project at Palra, Sector-70A, Gurgaon, Haryana.	DLF Limited
Geotechnical Investigation for Proposed "Unihomes" at Sector-113, Noida (UP)	Unitech Limited
Geotechnical Investigation for Proposed low Rise Villas, Group Housing Project at Sector-60 Gurgaon, Haryana	IREO Management Pvt. Ltd.
Geotechnical Investigation for Proposed High-Rise Villas, Group Housing Project at Sector-60 Gurgaon, Haryana	IREO Management Pvt. Ltd.
Geotechnical Investigation for Proposed Exquisite Residential Complex at Sector-71 Badshahpur Gurgaon	Unitech Limited
Geotechnical Investigation for Proposed "Leisure Park" Project at Gautam Budh Nagar, Greater Noida (U.P)	Amrapali Leisure Valley Developers
Geotechnical Investigation for Proposed low-Rise Villas at "leisure Valley" Project, Gautam Budh Nagar, Greater Noida (U.P)	Amrapali Leisure Valley Pvt. Ltd.
Geotechnical Investigation for Proposed "Golf Home" Project at Gautam Budh Nagar Greater Noida (U.P)	Amrapali Smart City Developers Pvt. Ltd.
Geotechnical Investigation for Proposed Group Housing Project "Centrum Park" at Sector-103 Village Daulatabad, Gurgaon (Haryana)	Selene Constructions Limited
RCC cast-in-situ Bored Piles for Victory Valley Residential Project, Sector-67, Gurgaon, Haryana.	IREO Victory Valley Pvt. Ltd.
Geotechnical Investigation for "Amrapali Eden Park" at F-27 Sector-50, Noida, U.P.	Amrapali Park Developer Pvt Ltd
Geotechnical Investigation for Proposed group Housing project at sector-58, Gurgaon Haryana	Orange Reality Pvt. Ltd.
Geotechnical Investigation for Amrapali Group Housing at Sector- 45, Noida, U.P.	Amrapali Group
Geotechnical Investigation for Proposed Group Housing 'Park View Select' at Sector 67, Gurgaon, Haryana	Bestech India Private Limited
Geotechnical Investigation for Proposed Group Housing at Uniworld Gardens -II, Sector-47, Gurgaon, Haryana.	Unitech Limited
Geotechnical Investigation for Amrapali Empire at Republic Crossing, NH-24, Ghaziabad (U.P)	Amrapali Group
Geotechnical Investigation for 'Pioneer Park' Residential Complex at Sector-61, Gurgaon, Haryana	Pioneer Urban Land & Infrastructure Ltd.
Geotechnical Investigation for Proposed Group Housing Project at Sector-117, Noida	Unitech Limited
Geotechnical Investigation for DLF-Hines Commercial and Housing Complex at Sector-43, Phase-V Gurgaon, Haryana	YG Reality Private Limited
Geotechnical Investigation for Proposed Group Housing (Express Greens-II) At Sector-M1A, Manesar New Gurgaon, Haryana	DLF New Gurgaon Homes Developers Pvt. Ltd.

Commercial & Residential

NAME OF PROJECTS	CLIENT
Geotechnical Investigation for Proposed "Unihomes" Project Kolar Road at Bhopal Madhya Pradesh	SVS Buildcon Pvt. Ltd.
Geotechnical Investigation for Proposed Residential Group Housing Project ("Pan Oasis") at Sector-70, Noida (U.P)	Pan Realtors Pvt. Ltd.
Geotechnical Investigation for Proposed Group Housing Project at Sector-92 (13.394 acres) Gurgaon, Haryana	DLF Projects Ltd.
Geotechnical Investigation for Proposed Group Housing Project at Sector-92 (15.181 Acres) Gurgaon, Haryana	DLF Projects Ltd.
Geotechnical Investigation for Proposed Residential Project at Sector-Chi-V, Greater Noida (U.P)	Ultra Home Construction Pvt. Ltd.
Geotechnical Investigation for Proposed Housing at Sector-67 Gurgaon, Haryana	DSR Realtors Pvt. Ltd.
Geotechnical Investigation for Proposed Group Housing at Sector-61, Village Behrampur Gurgaon, Haryana	IREO Private Limited
Geotechnical Investigation for Proposed Group Housing Project at Sector-58, Gurgaon, Haryana	Orange Reality Pvt. Ltd.
Geotechnical Investigation for Proposed Group Housing 'Park View SPA' at Sector-47 Gurgaon, Haryana	Bestech India Private Limited
Geotechnical Investigation For Proposed Residential Accommodation at Mudra Vihar, Sector-23 Noida, U.P.	Indian Institute of Technology, Delhi
Geotechnical Investigation for Proposed IT Office Complex and Group Housing Project at Phase-IX Extn. Plot No.1, Mohali, Punjab.	Bestech India Private Limited
Geotechnical Investigation for Proposed Group Housing Complex at Sector-82, Faridabad Haryana	Business Park Town Planners Ltd.
Geotechnical Investigation for "Harmony" at Nirvana Country Gurgaon	Unitech Limited
Geotechnical Investigation for Proposed Housing Project "Silverglades" at Dehradun Uttaranchal	Dehra Construction Pvt.Ltd.
Geotechnical Investigation for The Close (North) at Nirvana Country Gurgaon, Haryana	Unitech Limited



Thermal

NAME OF PROJECTS	CLIENT
Geotechnical Investigation for proposed 600 MW (4x150 MW) Sarguja Thermal Power Project (TPP) at Village Parsa, Tehsil Udyapur, Distt. Sarguja, Chhattisgarh	Surguja Power Private Limited
Geotechnical Investigation for 2X660 MW Coal Based Super Critical Thermal Power Project of NTPC at Village Selda, Distt. Khargone, Madhya Pradesh	Larsen & Toubro Limited
Geotechnical Investigation for Additional Coal Handling Plant of Kakatiya Thermal Power Plant of TSGENCO at Village Chelpur in Warangal District, Telangana	Energ Engineering Projects Limited
Geotechnical Investigation Work for 2x660 MW Anuppur Thermal Power Project, Near Village-Chatai, Distt. Anuppur, Madhya Pradesh	Welspun Energy Anuppur Pvt. Ltd.
Geotechnical Investigation Work for 2x660 MW Mirzapur Thermal Power Project, Village-Dadri Khurd, Tehsil-Mirzapur Sadar, Distt. Mirzapur, Uttar Pradesh	Welspun Energy UP Pvt. Ltd.
Geotechnical Investigation for Township FGUTPP Unchahar, Uttar Pradesh	NTPC Limited
Geotechnical Investigation for Proposed RRVUNL, KSTPS, Kota CHP Package, Rajasthan	Energ Engineering Projects Ltd.
Geotechnical Investigation for Singrauli STPP, Stage- II (2X500MW) at Singrauli, Madhya Pradesh	Bharat Heavy Electricals Limited
Geotechnical Investigation for Firoz Gandhi Unchahar Thermal Power Station, Stage-I (2x210 MW), Unchahar, Uttar Pradesh	Bharat Heavy Electricals Limited
Geotechnical Investigation for 1x210 MW Koradi Thermal Power, U#6, Koradi, Maharashtra	Bharat Heavy Electricals Limited
Geotechnical Investigation for Proposed NLC Power Plant at Tamil Nadu	Bharat Heavy Electricals Limited
Geotechnical Investigation for Proposed 2x150 MW Thermal Power Project at Vellaturu, Nalgonda Distt., Andhra Pradesh	Mecwel Power Private Limited
Topographical & Geotechnical Survey for 2x660 MW RRVUNL Thermal Power Project, near Chhabra, Rajasthan	Larsen & Toubro Limited
Geotechnical Investigation for Ghatampur TPS 3x660 MW at Ghatampur Tehsil, UP	Neyveli Lignite Corporation Limited
Geotechnical Investigation for 4x660MW Lanco Himavat TP Project near Bhognipur, Rama Bai Distt, Uttar Pradesh	Lanco Infratech Limited
Geotechnical Investigation for Proposed Project at 540 MW (Ph-I: 4x135 MW) Surguja Thermal Power Project, Chhattisgarh	Adani Infra (India) Limited
Geotechnical Investigation for 1x250 MW Coal Based Thermal Power Plant at Dibiyapur, Distt. Auraiya, UP	UM Power Limited
Geotechnical Investigation for Muzaffarpur Thermal Power Project Stage-II (2 X 195 MW) at Kanti, Muzaffarpur District, Bihar	Hindustan Construction Co. Limited
Geotechnical Investigation for 2 X 250 MW Lignite Based Thermal Power Project at Padva, District Bhavnagar, Gujarat	The Indure Private Limited

Thermal

NAME OF PROJECTS	CLIENT
Geotechnical Investigation for 2 X 660 MW Super Critical Thermal Power Project at Narsinghpur, Madhya Pradesh	Today Homes and Infrastructure Pvt. Ltd.
Geotechnical Investigation for (2X600) MW Thermal Power Plant Near Pipavav Port, District Amreli, Gujarat.	Pipavav Energy Pvt. Ltd.
Geotechnical Investigation for DGEN Mega Power Project at Plot No.Z/9, Dahej SEZ, Tal: Vagra, Dist: Bharuch, Gujarat	Torrent Energy Limited
Geotechnical Investigation for 4x660 MW Super Critical Power Plant at Dahej, Gujarat	Adani Power Dahej Private Limited
Geotechnical Investigation for 2x150 MW Thermal Power Plant (Phase-2) at Tamminapatnam and Mommidi Villages, Nellore Distt. AP.	Simhapuri Energy Pvt.Ltd.
Geotechnical Investigation for 2x150 MW TPP at Rajanagaram, East Godavari Distt. (AP)	Rajanagaram Gas Power Pvt.Ltd.
Geotechnical Investigation for 3x660 MW Koradi Thermal Power Station at Koradi, Nagpur, Maharashtra	Lanco Infratech Limited
Geotechnical Investigation for Bithnok TPP at Bikaner, Rajasthan	Neyveli Lignite Corporation Limited
Geotechnical Investigation for 2x250 MW Chhabra Thermal Power Plant, Stage-II (Unit 3 & 4) in District Baran, Rajasthan.	The Indure Private Limited
Geotechnical Investigation for 2x270 MW Coal-Based Thermal Power Plant at Village Goindwal Sahib, Tarn Taran District, Punjab.	Punj Lloyd Limited
Additional Geotechnical Investigation for Phase-III (2x660 MW + 1x660 MW + 2x660 MW) for 3300 MW Tiroda Thermal Power Project at Village Tiroda Distt. Gondia, Maharashtra	Adani Power Maharashtra Private Limited
Geotechnical Investigation for 2x660 MW Super Critical TPS, Suratgarh, #7&7, CHP & AHP	Bharat Heavy Electricals Limited
Geotechnical Investigation for Proposed 2x150 MW Thermal Power Project at Vellaturu, Nalgonda Distt., Andhra Pradesh	Mecwel Power Private Limited
Topographical & Geotechnical Survey for 2x660 MW RRVUNL Thermal Power Project, near Chhabra, Rajasthan	Larsen & Toubro Limited
Geotechnical Investigation for Ghatampur TPS 3x660 MW at Ghatampur Tehsil, UP	Neyveli Lignite Corporation Limited
Geotechnical Investigation for 4x660MW Lanco Himavat TP Project near Bhognipur, Rama Bai Distt, Uttar Pradesh	Lanco Infratech Limited
Geotechnical Investigation for Proposed Project at 540 MW (Ph-I: 4x135 MW) Surguja Thermal Power Project, Chhattisgarh	Adani Infra (India) Limited
Geotechnical Investigation for 1x250 MW Coal Based Thermal Power Plant at Dibiyapur, Distt. Auraiya, UP	UM Power Limited
Geotechnical Investigation for Muzaffarpur Thermal Power Project Stage-II (2 X 195 MW) at Kanti, Muzaffarpur District, Bihar	Hindustan Construction Co. Limited
Geotechnical Investigation for 2 X 250 MW Lignite Based Thermal Power Project at Padva, District Bhavnagar, Gujarat	The Indure Private Limited



Thermal

NAME OF PROJECTS	CLIENT
Geotechnical Investigation for 2 X 660 MW Super Critical Thermal Power Project at Narsinghpur, Madhya Pradesh	Today Homes and Infrastructure Pvt. Ltd.
Geotechnical Investigation for (2X600) MW Thermal Power Plant Near Pipavav Port, District Amreli, Gujarat.	Pipavav Energy Pvt. Ltd.
Geotechnical Investigation for DGEN Mega Power Project at Plot No.Z/9, Dahej SEZ, Tal: Vagra, Dist: Bharuch, Gujarat	Torrent Energy Limited
Geotechnical Investigation for 4x660 MW Super Critical Power Plant at Dahej, Gujarat	Adani Power Dahej Private Limited
Geotechnical Investigation for 2x150 MW Thermal Power Plant (Phase-2) at Tamminapatnam and Mommidi Villages, Nellore Distt. AP.	Simhapuri Energy Pvt.Ltd.
Geotechnical Investigation for 2x150 MW TPP at Rajanagaram, East Godavari Distt. (AP)	Rajanagaram Gas Power Pvt.Ltd.
Geotechnical Investigation for 3x660 MW Koradi Thermal Power Station at Koradi, Nagpur, Maharashtra	Lanco Infratech Limited
Geotechnical Investigation for Bithnok TPP at Bikaner, Rajasthan	Neyveli Lignite Corporation Limited
Geotechnical Investigation for 2x250 MW Chhabra Thermal Power Plant, Stage-II (Unit 3 & 4) in District Baran, Rajasthan.	The Indure Private Limited
Geotechnical Investigation for 2x270 MW Coal-Based Thermal Power Plant at Village Goindwal Sahib, Tarn Taran District, Punjab.	Punj Lloyd Limited
Additional Geotechnical Investigation for Phase-III (2x660 MW + 1x660 MW + 2x660 MW) for 3300 MW Tiroda Thermal Power Project at Village Tiroda Distt. Gondia, Maharashtra	Adani Power Maharashtra Private Limited
Geotechnical Investigation for 3x660 MW Koradi TPS expansion Project at Koradi, Nagpur, Maharashtra	Larsen & Toubro Limited
Geotechnical Investigation for Proposed 750 MW Lanco Kondapalli Combined Cycle Power Plant Project (Stage-III), Krishna Distt, A.P.	Lanco Infratech Limited
Geotechnical Investigation for 225 MW Gas-Based Combined Cycle Power Plant at Kashipur Uttarakhand	Sravanthi Infratech Private Limited
Geotechnical Investigation for proposed 366 MW Lanco Kondapalli Combined Cycle Power Plant Project Phase-II, Krishna Distt, A.P.	Lanco Infratech Limited
Geotechnical Investigation for Proposed Power Plant at Ucchipinda Village at Janjgir-Champa District Chhattisgarh	RKM Powergen Pvt. Ltd.
Geotechnical Investigation & Topographical Survey for 2x300 MW Stage-I and 2x300 MW Stage-II Rosa Thermal Power Project at Shahjahanpur (UP)	Reliance Energy Limited
Geotechnical Investigation for proposed Nagarjuna thermal Power Project (2x507.5 mw) Near Padubidiri, Udipi Distt. Mangalore Karnataka	Lanco Infratech Limited
Geotechnical Investigation for 370 MW Utran combined cycle power project of GSECL Distt. Surat, Gujarat (Package Y-42)	Alstom Projects India Limited
Geotechnical Investigation work for 500 MW Khaperkheda Thermal Power Station.	BGR Energy Systems Limited

Thermal

NAME OF PROJECTS	CLIENT
Geotechnical Investigation for Proposed 1X500 MW Thermal Power at Kotheudem for APGENCO	BGR Energy Systems Limited
Geotechnical Investigation for Proposed 1000 MW Lignite Based Thermal Power Project Barmer, Rajasthan	Raj Westpower Ltd.
Geotechnical Investigation for Construction of 2x250 MW Chhabra Thermal Power Project at Distt. Baran, Rajasthan	Punj Lloyd Limited
Geotechnical Investigation for 500 MW Thermal Power Plant (Stage-I, Unit-1) for KTPS at Bhoopalapally, Warangal Andhra Pradesh	BGR Energy Systems Limited
Geotechnical Investigation work for Jhajjar joint Venture Power Project (3x500MW)	Aravali Power Company Pvt. Ltd.
Geotechnical Investigation for construction of coal based 2x300 MW Deen Bandhu Choto Ram Thermal Power Station at Yamuna Nagar, Haryana	Reliance Energy Limited
Geotechnical Investigation for Coal Conveyor at 1000 MW (4x250 MW Units) O.P. Jindal Super Thermal Power Plant at Village Tamnar Distt. Raigarh, Chhattisgarh	Jindal Power Limited
Geotechnical Investigation For 2x300 Mw Coal Based Thermal Power Station at Yamuna Nagar (Stage-II, Phase-I)	Reliance Energy Limited
Geotechnical Investigation for 4x250 MW Raigarh Thermal Power Project at Village Tamnar, District Raigarh, Chhattisgarh	Jindal Power Limited
Supplementary Geotechnical Investigation for North Karanpura Super Thermal Power Project (NKSTPP)	NTPC Limited
Topographical Survey & Geotechnical Investigation for 2x250 MW Coal Based Tau Devi Lal Thermal Power Station Unit Nos. 7 & 8 at Panipat (Haryana)	BSES Limited
Preliminary Geotechnical Investigation Report / Recommendations for 2 X 250 MW (Nominal) Coal Based Thermal Power Plant, Korba (East), Chhattisgarh	NTPC Limited
Preliminary Geotechnical Investigation Report / Recommendations for 2 X 250 MW (Nominal) Coal Based Thermal Power Plant, Tanda, U.P.	NTPC Limited

Solar

NAME OF PROJECTS	CLIENT
Geotechnical Investigation for 20 MW Solar Project at Mithakhari in Andaman & Nicobar Islands	NTPC Limited
Soil Investigation for 40 MW Solar Power Project at Village- Morasani Pally & Gunjarla Pally Shantipuram Mandal, District - Chittoor, Andhra Pradesh	Dayanidhi Solar Power Pvt. Ltd.
Geotechnical Investigation for 1 MW Solar Power Plant at Haridwar, Uttarakhand	Hero Future Energies Limited
Conducting Pull-out for Proposed Solar Power Project at Chatnal, Tel-Santpur, distt. Bidar, Karnataka	Tata International Limited
Conducting Pull-out Tests at Proposed Solar Power Project at Shantipuram, Andhra Pradesh	Tata International Limited



Solar

NAME OF PROJECTS	CLIENT
Conducting Pullout Tests at Solar Power Project at Distt. Fazilka, Punjab	Tata International Limited
Geotechnical Investigation for 250 MW NTPC Solar Power Project at NP Kunta Village, Kadiri Town, Distt. Anantapur, Andhra Pradesh	Tata Power Solar Systems Limited
Geotechnical Investigation for Installation of 50 MW Solar Power Project at Village That, Tehsil-Pokhran, Distt. Jaisalmer, Rajasthan	Today Homes & Infrastructure Pvt. Ltd.
Topographical Survey and Electrical Resistivity Tests for 21 MW Punj Lloyd Solar Power plant at Mansa, Punjab	Jakson Power Solutions
Geotechnical Investigation and Topographical Survey for Proposed Solar Power Plant at Boha Ratia Road, Mansa Distt. Punjab	Bosch Limited
Topographical Survey & Geotechnical Investigation 2.1 MWp Solar Power Project in Vill. Mandi Lakhewali, Distt. Sri Muktasar, Punjab	Enerparc Energy Private Limited
Conducting Pull-out Test for Proposed 20 MW Solar Power Plant at Gamiwala, Boha, Dist. Mansa, Punjab	Jakson Engineers Limited
Geotechnical Investigation for Development of 50 MW Solar Photo Voltaic Plant at NTPC Ganeshpura, Distt. Rajgarh, Madhya Pradesh	Tata Power Solar System Ltd.
Geotechnical Investigation for Proposed 5 MW Solar Plant at NTPC Dadri, Uttar Pradesh	Wipro EcoEnergy
Geotechnical Investigation for 10 MW Solar Power Plant at TSTPS	NTPC Limited
Geotechnical Investigation & Topographical Survey for 5 MW GAIL PV Project, Jaisalmer, Rajasthan	Lanco Solar Energy Private Limited
Geotechnical Investigation for Proposed 150MW Solar Power Project at Neemach, Madhya Pradesh	Welspun Energy Limited
Geotechnical Investigation for 25 MW Neemuch Solar Power Project at Neemuch, Madhya Pradesh	Welspun Energy Limited
Geotechnical Investigation for 25 MW Solar Power Plant at Taluka Mangalwedha, Distt. Sholapur Maharashtra	Welspun Energy Limited
Geotechnical Investigation for Proposed 2 MW Solar Power Plant at Chandrapur, Maharashtra	Instant Energy Private Limited
Geotechnical Investigation for Proposed Solar Energy Centre at Gwal Pahari on Gurgaon-Faridabad Road	Stup Consultants Pvt. Ltd.
Geotechnical Investigation for Solar Energy Centre at Gwalpahari Gurgaon, Haryana	SunBorne Energy Technologies Pvt. Ltd.
Geotechnical Investigation of 25 Acres Land at Village Jhajru for Proposed Solar Power Plant at FGPS, Faridabad	NTPC Limited
Topographical Survey and Soil Investigation for Solar Power Plant at Amreli, Gujarat	Unity Power Pvt. Ltd.
Topographical Survey and Geotechnical Investigation for Proposed 5 MW Solar Power Plant at Warora, District - Chandrapur, Maharashtra.	Videocon Industries Limited
Geotechnical Investigation for National solar thermal Power Testing Research And Simulation Facility at Gwalpahari, Gurgaon	Indian Institute of Technology, Mumbai

Refineries and Petrochemical

NAME OF PROJECTS	CLIENT
Sub-Soil Investigation for 2x900 MT Mounded Storage Vessels at IOCL, Bahadradab, Haridwar, Uttarakhand	Sharp Tanks & Structural (P) Ltd.
Geotechnical Investigation for Rajasthan Refinery at Pachpadra, District Barmer, Rajasthan - Phase-I	Hindustan Petroleum Corporation Ltd. (C/o EIL Limited)
Geotechnical Investigation for Rajasthan Refinery at Pachpadra, District Barmer, Rajasthan - Phase-II	Hindustan Petroleum Corporation Ltd. (C/o EIL Limited)
Geotechnical Investigation for Opal Hdpe Project at Dahej Petrochemical Complex, Gujarat	Samsung Engineering Co. Ltd.
Geotechnical Investigation for OPaL Butene- 1 Unit at Dahej Petrochemical Complex, Gujarat	Technip France
Geotechnical Investigation for Construction of 6 Nos. Mounded LPG Storage System at IOCL, Mathura	G.R. Engineering Private Limited
Geotechnical Investigation for Sulphur Palletization Unit at IOCL, Mathura Refinery (U.P.)	Technip KT India Ltd.
Geotechnical Investigation for Onshore Gas Terminal at Mallavaram, Andhra Pradesh	Gujarat State Petroleum Corporation Ltd.
Geotechnical investigation for Construction of Additional FCCU & PRU Ravamp Project at IOCL Mathura Refinery	Technip KT India Ltd.
Geotechnical Investigation for OPaL DFCU & AU Project at Dahej Petrochemical Complex, Gujarat	Samsung Engineering Co. Ltd.
Geotechnical Investigation for Construction of Additional 60 TPD Sulphur Recovery Unit (SRU-IV) at IOCL, Mathura Refinery	Technip KT India Ltd.
Geotechnical Investigation for Proposed Hydrogen Generation Unit (HGU) at HPCL Vizag Refinery, Vishakapatnam Andhra Pradesh	Technip KT India Ltd.
Geotechnical Investigation for IOCL's proposed MEG Unit at Naphtha Cracker Complex Panipat Refinery	Samsung Engineering Co. Ltd.
Geotechnical Investigation for Condensate Storage Unit Plant at Kg-OSN-2001/3 Exploration Block Yanam, Andhra Pradesh	Gujarat State Petroleum Corporation Ltd.
Geotechnical Investigation for 2x30 MW, GTG Based, Co-Generation Plant at IOCL Gujarat Refinery Jawahar Nagar, Vadodara Gujarat	Bharat Heavy Electricals Limited
Geotechnical Investigation for Construction of Naptha Cracker Project at IOCL, Panipat, Haryana	Toyo Engineering Corporation
Geotechnical Investigation for Captive Power Plant of Naptha Cracker Project at IOCL Panipat Refinery, Haryana	Larsen & Toubro Limited
Geotechnical Investigations for Visakh Refinery Clean Fuel Project at Visakhapatnam	Hindustan Petroleum Corpn. Ltd.
Geotechnical Investigations for Panipat Refinery Expansion Project	Indian Oil Corporation Limited
Geotechnical Investigation for Hydrocracker Unit at Panipat Refinery Panipat (Haryana)	Daelim Industrial Co.Ltd.



TOPOGRAPHICAL SURVEY

- > Topographical Survey for Proposed Project at Kota, Rajasthan
- > Topographical Survey & Geotechnical Investigation for 5 MW GAIL PV Project, Jaisalmer, Rajasthan
- > Topographical Survey for 765 KV Sub-station at Anta Distt. Baran, Rajasthan.
- > Topographical Survey for 50 MW Solar Thermal Power at Village Naukh Distt. Jaisalmer, Rajasthan
- > Topographical Survey for 765 KV Substation at Unnao (UP).
- > Topographical Survey for 765 / 400 KV Switchyard for Anpara-D TPS at Anpara (UP).
- > Topographical Survey for CW Pump House and CW Water Line at Harduaganj Thermal Power Plant, Harduaganj (UP).
- > Topographical Survey for New Power Plant of Shree Cement Ltd. at Bangur Nagar, Beawar, Rajasthan.
- > Topographical Survey for Proposed Cement Grinding Unit "Shree Cement Ltd. at Jaipur, Rajasthan.
- > Topographical Survey for Steel Processing Unit of SAIL at Lakhimpur Kheri (UP).
- > Topographical Survey for Setting up of Steel Processing Unit of SAIL / Durgapur Steel Plant at Kandrori, Kangra, Himachal Pradesh.
- > Topographical Survey for proposed 6000 TPD Cement Plant at Manakahri, Satna (MP).
- > Preparation of Topographical Survey Report for 3x350 MW Gas Based Plant at Faridabad

GROUND IMPROVEMENT

- > Installation and Testing of Granular Piles / Rammed Stone Columns for Proposed Temple of Baba Masatnathji at Rohtak, Haryana.
- > Strengthening of foundation and rectification of cracks in affected flats at Pocket A-10, Kalkaji Exn., New Delhi.
- > Pressure grouting for Pre -treatment Plant at Tenughat, Bihar.
- > Strengthening of foundation of Overhead Tank for Inland Container Depot at Tuglakabad, New Delhi.
- > Stone Columns/Gravel piles for proposed Digestor Tank of Simbhaoli Sugar Mills Limited.
- > Installation of Stone Columns at ROB-22 site at Okhla, New Delhi.
- > Boring and Providing Gravel Piles for 3 x 22 m dia of Fire water tanks at LPG Bottling Plant, Madanpur Khadar, New Delhi.
- > Pile Foundation and Rammed stone columns for Janm-bhoomi Mandir at Mangarh (UP).
- > Improvement of Foundation Bed by using Granular Piles for the Restorate of Kalyana Mandapa of Thousand Pillars Temple at Hanuma Konda, Warangal.

PILE FOUNDATION CONSTRUCTION

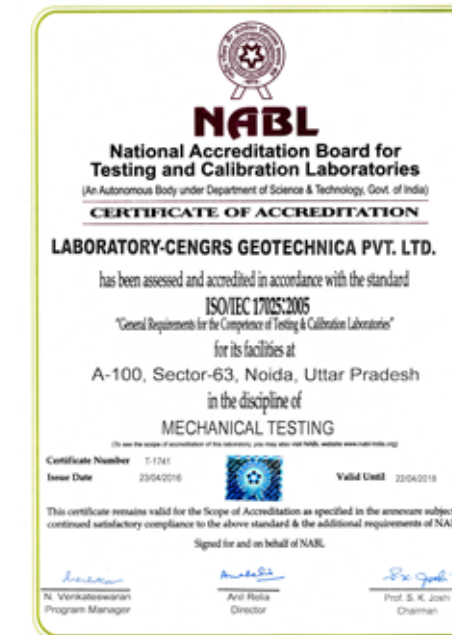
- > Construction of Contiguous Pile Wall Shoring System, Commercial Building, Sector-104, Gurgaon, Haryana
- > Bored Piles for C/o New Office Building of M/s. The Tata Power Company Ltd. at Plot No. B-12 & B-13, Sector-4, Noida (UP)
- > RCC cast-in-situ bored piles for Extrusion Press No.8 at Hindalco, Renukoot (UP).
- > RCC cast-in-situ bored piles for Victory Valley Residential Project at Sector-67, Gurgaon
- > Bored Piles for Laminated Fabric Plant of SRF at Kashipur, Uttarakhand
- > Bored Piles for C/o Office Building of M/s. Pixion Vision Pvt.Ltd. at Plot No.FC-2&4, Film City, Sector-16A, Noida (UP).
- > Bored Piles for New Campus of NIIT Technologies Ltd. at Greater Noida (UP).
- > Bored Piles for Monorail at Amusement Park Noida (UP).
- > Bored Piles for C/o Twin Flue RCC Chimney at BESCL, Bhilai, Distt. Durg (C.G.).
- > Bored Piles for Coal Handling Plant for 2x210 MW TPS Parichha, Unit-3&4 (UP).
- > Bored Piles for 220 M High Twin Flue RCC Chimney for 2x210 MW Thermal Power Station at Parichha (UP).
- > Driving of Soldier Piles for DMRC Project (Delhi Metro) at ISBT Section A-4.
- > Bored Piles, Pile caps and Beams for 400 KV D/C Agra-Agra Transmission Line on Yamuna River Crossing (Loc.12/2).
- > Bored Piles, Pile caps and Beams for River Crossing Tower at Borgong River under 400 KV / DC Ranganadi Balipara Transmission Line, Assam.
- > Bored Piles for Construction of 2 nos. Flyovers Viz. Pathankot Chowk and Hoshiarpur Chowk at Jalandhar Bypass (NH-1) Punjab.
- > Bored Piles, under-reamed piles and Gravel Piles for Indane Bottling Plant at Madanpur Khadar, New Delhi.
- > Bored Piles for SAIL Stockyard at Dankuni, West Bengal.
- > Bored Piles, Pile Caps and Beams for 220 KV D/C Auraiya-Agra Transmission Line at Agra on bank of River Yamuna.
- > Bored pile and pile caps for Rajasthan Vidhan Sabha Project at Jaipur.
- > Bored Piles and rammed stone columns for providing Soil Stabilization to Support Bhakti Prakash Kripalu Anusandhan Kendra at Mangarh (UP).
- > Bored Piles and Pile Caps for C/o C.T.O. Cum Administrative Building at Kanpur (UP) for Department of Telecommunications.
- > Bored Piles for C/o Flyover at Bhagwan Talkies, Agra for UP P.W.D. through M/s. Progressive Construction Ltd.
- > Under-reamed piles, pile caps, grade beams for C/o 1520/1476 Houses (MIG/LIG/SFS) in Sect.18B, Dwarka, Ph.II, Delhi for DDA.
- > Under-reamed piles, pile caps, grade beams for C/o 192 SFS Houses (Gr.1) at Shalimar Bagh, Block C&D, Pocket-1, Delhi for DDA.
- > Under-reamed pile foundations for colour Picture Tube Plant at Karzan near Baroda, Gujarat of JCT Electronics Ltd.



FOUNDATION TESTING

- > High-Strain Dynamic Pile Load Tests, CrossHole Sonic Logging Tests & Pile Integrity Tests for Proposed Varona Height Project, Ph-II, Greater Noida (West), Uttar Pradesh
- > Supervision of Pile Construction, Conducting Pile Load Tests, HSDLT & Pile Integrity Tests for Lotus Especia, Ph-II, GH-02 at Sector-100, Noida, U.P.
- > High-Strain Dynamic Pile Load Tests at North Eye Project at Sector-74, Noida (U.P).
- > Pile Integrity Tests Near Hindon River, Ghaziabad
- > Pile Integrity Tests at Chainage 65+177 Km (P2) on Zirakpur-Parwanoo Bypass Section of NH-22 (Himachal Pradesh)
- > Pile Integrity Tests Conducted at Sonipat, Haryana
- > Pile Integrity Tests for Construction of 4 Lane ROB at X-ING No 88 SPL at Km 154/6-8 on Delhi UMB Section at Kurukshetra, Haryana
- > Pile Integrity Tests at Delhi One Project Site, Sector-16B Noida (U.P).
- > Pile Integrity Tests for North Eye Project Sector-74, Noida
- > Pile Integrity Tests at Hindalco Project Site at Singrauli (M.P).
- > Low Strain Pile Integrity Tests On Boundary Wall Piles Installed at Badalpur (U.P)
- > Pile Integrity Test for Micropiles at Kimi, Arunachal Pradesh
- > Pile Integrity Tests at Proposed Expansion Project at Bazpur, Uttarakhand
- > Pile Integrity Test Results for Proposed C/o ROB on Level Crossing No. 2C/2T at Bhatinda, Punjab
- > Pile Integrity Tests conducted on piles at Proposed ROB at Bailey Road, Patna Bihar
- > Pile Integrity Test conducted on piles for high level bridge across Narmada River at Km. 1/4 of Mandla Purba Marg at Rangrage Ghat Mandla Distt, Madhya Pradesh
- > Low Strain Pile Integrity Test Results for Construction of ROB at Rohtak Haryana
- > Pile Integrity Tests for Proposed Industrial Unit at Bazpur, Uttarakhand
- > Pile Integrity Test Results For Proposed ROB at L/C no. 71-A at KM 92/12-13 in Hanumangarh Junction Yard on Suratgarh-Bathinda Section
- > Pile Integrity Test Results for proposed ROB L/C No. 45-A on Delhi-Rewari railway line on Haily Mandi-Kulana Road Gurgaon, Haryana
- > Pile Integrity test results for proposed ROB at L/C No. 25-B on Delhi-Rewari railway line on Gurgaon-Daulatabad Road Gurgaon, Haryana
- > Pile Integrity Test Results for Proposed Mall at Sector-18, Noida
- > Pile Integrity Test results for Proposed 2X300 MW (Stage-I & II) Rosa Thermal Power Project at Shahjahanpur (U.P)
- > Low Strain Pile Integrity Test Results for Construction of Judicial Complex at Panipat, Haryana
- > Pile Integrity Test Results for Proposed Monorail at Amusement Park Noida, U.P.
- > Pile Capacity Analysis for Seismic Evaluation of The Existing Players' Building (Delhi Sachivalaya), New Delhi
- > Pile Integrity Test Results for Proposed Rob at L/C No. 59-A on Delhi-Bhatinda Railway Line on Rohtak-Jhajjar Road (City Portion) at Rohtak, Haryana
- > Pile Integrity Testing at Loc. No.159 of 220 KV D/C Tanakpur-Bareilly Transmission Line

CERTIFICATIONS



ISO 17025:2005 CERTIFICATION



MSMED REGISTRATION



ISO 9001:2015 CERTIFICATION



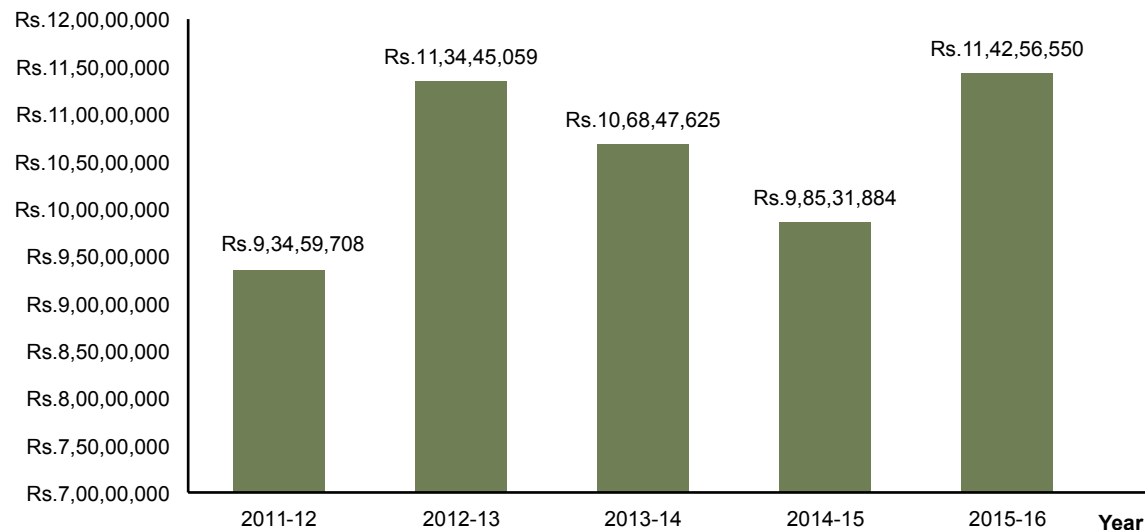
FINANCIAL STATEMENT

This is to certify that the Annual Turn - over of the Company, M/s.Cengrs Geotechnica Private Limited during the last five years is as under:-

ANNUAL TURN - OVER

1. During the Financial Year 2011 - 2012	Rs. 9, 34, 59,708-00
2. During the Financial Year 2012 - 2013	Rs. 11, 34, 45,059-00
3. During the Financial Year 2013 - 2014	Rs. 10, 68, 47,625-00
4. During the Financial Year 2014 - 2015	Rs. 9, 85, 31,884-00
5. During the Financial Year 2015 - 2016	Rs. 11,42,56,550-00

TURNOVER



LIST OF KEY PERSONNEL

Name	Educational Qualification	Experience	No. of years with Firm
A. DIRECTORS			
Mr. Sanjay Gupta	B.Tech. (Civil), M.Tech. (SM&FE)	46	26
Mr. Ravi Sundaram	B.Tech. (Civil), M.Tech (SM&FE)	35	26
B. MANAGERIAL			
Sh.Arvind Jain	B.Com	36	26
Sh. K.K. Jha	B.Sc.	30	07
Mr. Sorabh Gupta	B.Tech., IIT Delhi M.S., Stanford University	13	09
C. ENGINEERS			
Mr. Rajiv Jain	B.E. (Civil)	33	24
Mr. Bhajan Lal	M.Sc. (Geology)	07	06
Mr. Swapneel Kalra	M.Tech (Geotechnical)	02	02
Mr. Abraham V. Varghese	M.Tech (Geotechnical)	04	02
Mr. Prashant Prashar	M.Tech (Applied Geology)	12	02
D. FIELD TECHNICIANS / SUPERVISORS			
Sh. V.K.S. Negi	Sr. Supervisor	45	26
Sh. A.K. Walia	Sr. Supervisor	42	26
Md. Allauddin	Sr. Supervisor	37	22
Sh. Yogender Singh	Sr. Supervisor	27	26
Sh. Rajinder Sharma	Supervisor	26	22
Sh. Umesh Prasad	Supervisor	26	26
Sh. Hari Lal	Supervisor	26	26
Sh. Om Pal Sharma	Supervisor	26	26
Sh. Ram Singh	Supervisor	34	16
Sh. Onkar Singh	Supervisor	22	12
Md. Afzal Hussain	Supervisor	22	22
Mr. Mange Ram	Supervisor	11	08
Mr. Vijay Tiwari	Supervisor	11	11
Mr. Nawraj	Supervisor	11	09
Mr. Ram Khilladi	Supervisor	22	12
Mr. Surender Singh Chahr	Supervisor	07	07
Mr. Bed Prakash	Lab Technician	17	11
Mr. Pushpender Bhardwaj	Lab Technician	09	09
Mr. Beni Singh	Lab Technician	26	26
Mr. Kishan Kumar	Lab Assistant	18	18
Mr. Divesh Kumar	Lab Assistant	12	12
Mr. Avdesh Kumar	Lab Assistant	17	08



Mr. Akhilesh Kumar	Lab Assistant	09	09
Mr. Lakhpat Singh	Lab Assistant	10	10
Mr. P.K. Mishra	Lab Assistant	09	09

E. DRILLERS / OPERATORS / MECHANICS

Mr. Vipin Kumar	Driller	14	13
Md. Anwar	Driller	25	24
Abdul Salam	Operator	24	24
Abdul Sattar	Operator	24	23
Mr. Lakhbinder Singh	Operator	14	14
Mr. Ram Sagar	Operator	14	14
Md. Bilal	Operator	16	16
Md. Afaq	Operator	15	15
Aley Hasan	Operator	29	20
Mr. Ram Ashray	Operator	34	20
Md. Mohib	Operator	22	19
Md. Karim Khan	Operator	14	14
Md. Muquim Khan	Operator	16	16
Mr. Pramod Kumar	Operator	14	11
Mr. Kali Padho Malik	Mechanic	24	22
Md. Haqem Khan	Mechanic	23	18
Mr. Hari Shankar	Mechanic	28	16
Mr. Tohid Ahmed	Mechanic	24	24

STAFF

Secretarial Staff	4
Accounts Section	5
Typist & Computer Operators	10
Draftsman	2
Office Support Staff	20
Junior Supervisors /Technicians	8
Asstt. Mechanics, Junior Drillers, Helpers etc.	25

NOTE:

1. The other field crew / workers shall be engaged on project to project basis.
2. The key person from the management cadre who shall be the overall responsible person for the project shall be Shri Sanjay Gupta, Managing Director (Alternative Shri Ravi Sundaram, Director). Deployment of engineers and Sr. Supervisors shall depend upon the actual working period.

BIO-DATA



Mr. Sanjay Gupta

B.Tech (Civil Engg.),
M.Tech (Soil Mech. & Found. Engg.)
FIGS, ISSMGE, FACCE, ISRMPTT, MCEAI,
IRC, IBC

[Mr. Sanjay Gupta's Biodata click here](#)

Mr. Sanjay Gupta completed his M.Tech in 1974 and has over 46 years experience as a geotechnical engineer in India. He started his career in 1971 with Unitech Ltd. and has conducted several major soil investigation works, directed field and laboratory testing and performed engineering studies. He has executed projects of installing bored piles and under-reamed piles and is a leading expert on pile foundations in the country.

He has tremendous experience in geotechnical engineering consultancy and construction.

Mr. Sanjay Gupta formed the Fengrs Group in 1983 and Cengrs Geotechnica Pvt. Ltd. in 1990 and is presently its Managing Director. As the key person in the company, his responsibilities include corporate management, business development, financial planning & control on operation of all projects of the Company. He directs all civil and geotechnical activities of the company.

His expertise includes large diameter bored piles, high capacity load testing of piles, ground improvement using stone columns, foundation design under difficult soil conditions including soft ground/ weak soils and under artesian conditions. His special interests include site investigations, under-reamed piles; cement grouting and dynamic testing of soils.

As member of the Geotechnical Engineering Committee of the IRC, he is actively involved in upgrading practice methods and preparing codes of practice for geotechnical aspects of highways and bridges. He has published several technical papers on field and practical geotechnical engineering.

PROFESSIONAL DATA

- Fellow, Indian Geotechnical Society (IGS) and Association of Consulting Civil Engineers India (ACCE).
- Member, International Society of Soil Mech. and Found. Engg. and Indian Society for Rock Mechanics & Tunneling Technology.
- Member, Indian Roads Congress (IRC). Has been nominated Member on the Geotechnical Engg. Committee (H-3) for the period 1997-1999, 2000-2002 and 2003-2005, Foundation, Sub-Structure & Protective Works and Masonry Bridges (B-4) Committee for the period 2003-2005 and Embankment, Ground Improvement and Drainage Committee (H-4) for the 2006-08 & 2008-10.
- Appointed as Member Secretary, Geotechnical Engg. Committee (H-3) of Indian Roads Congress for terms 1997-1999 (Period 98-99) and 2000 - 2002.
- Elected Vice Chairman, IGS Delhi Chapter during 1992-93 & 1997-99.
- Elected Executive Member IGS (National body) for the years 1997-98, 1999-2000, 2001-2002 and 2003-04.
- Member Bureau of Indian Standard (BIS) Committee on Foundation Engineering and active member in various sub-committees including for National Building Code.
- Elected Secretary of ACCE Delhi Local Centre for years 1995-97 and Treasurer for years 1997-99.
- Awarded IGS-Prof. Dinesh Mohan Award for Excellence in Geotechnical Practices, 2008 by Indian Geotechnical Society (IGS).



Mr. RAVI SUNDARAM

B.Tech (Civil Engg.),
M.Tech (Soil Mech. & Found. Engg)
FIGS, ISSMGE, MACCE

Mr. Ravi Sundaram's Biodata click here

Mr. Ravi Sundaram completed his M.Tech. in 1980 and has about 35 years experience as a consulting engineer in India and abroad. He started his career with McClelland International Limited (USA), a worldwide reputed geotechnical company. He was based in the Company's Office at Dammam, Saudi Arabia and worked on the Company's projects in Saudi Arabia, UAE, Qatar and UK. His international experience includes offshore & onshore soil investigation, geophysical tests, pile installation monitoring and pile drivability studies. He has conducted offshore and onshore pile load tests including a state-of-the-art

instrumented pile load test in the Arabian Gulf.

Mr. Ravi Sundaram joined the "Fengrs" Group in 1986 and is a founder director of Cengrs Geotechnica Pvt. Ltd. He directs all geotechnical consultancy services and geotechnical construction activities. He is in charge of soil investigation works including field works, laboratory testing and engineering studies. His field of activities include pile foundations, grouting, foundation strengthening and soil improvement. His responsibilities also include project and manpower planning, corporate administration and operational and financial controls on projects.

His expertise includes boreholes through soil and rock, resistivity and seismic surveys, dynamic testing of soils, rammed stone columns, pressure grouting, bored piles and groundwater studies. He has been involved in developing engineering solutions to problems of collapsible soils, soft clays, expansive soils, weak rocks etc. on major projects in India and abroad. His special interests include offshore piles, instrumentation, artesian conditions and foundations for bridges, transmission towers and high rise buildings. He has published several technical papers that reflect his experience in geotechnical engineering practice

PROFESSIONAL DATA

- Associate Member, Institution of Civil Engineers, London.
- Fellow, Indian Geotechnical Society (IGS), New Delhi.
- Member, Indian Roads Congress
- Member, International Society of Soil Mech. & Found. Engg. (ISSMFE) and Association of Consulting Civil Engineers India (ACCE)
- Elected Member of Executive Committee of IGS, Delhi Chapter during 1987-88, 2003-2005, and
- Co-Chairman for the year 1995-96 & 2005-2009.
- Elected Chairman, IGS Delhi Chapter during 2009-11.
- Elected Executive Member ACCE, Delhi Local Centre, 1997 - 1999.



Mr. Sorabh Gupta

B.Tech (Civil Engg.),
M.S (Civil Eng. & Enviro. Engg)

Mr. Sorabh Gupta's Biodata click here

An IIT Delhi alumnus; Mr. Sorabh Gupta completed his M.S. in Civil Engineering from Stanford University in 2004.

Mr. Sorabh started his career with Fugro West in California, where he worked on several major projects in USA, Africa and Mexico for a period of 3 years. During this time, he developed a keen interest in the field of earthquake engineering; including liquefaction assessment, Probabilistic Seismic Hazard Assessment, soil-structure interaction, etc.

He moved to India in 2008 after a short stint at Haley & Aldrich in Boston, and joined Cengrs Geotechnica Pvt. Ltd. as a Senior Project Engineer. In the

past 3 years, he has been actively involved in several major Geotechnical exploration programs across India. Mr. Sorabh is active in various professional organizations, and is currently a member of the IGS Delhi Chapter Executive Committee. He is also the recipient of the IGS Delhi Chapter Young Engineer's Award, 2008

PROFESSIONAL DATA

- Executive Committee Member (2009-present), Indian Geotechnical Society (IGS), Delhi Chapter
- Member, International Society for Soil Mechanics and Geotechnical Engineering (ISSMGE)
- Member, Indian Geotechnical Society (IGS), Main Body [Membership No: LM-2561]
- Member, Indian Geotechnical Society (IGS), Delhi Chapter [Membership No: LM-766]
- Member, Editorial Board, IGS Delhi Chapter Newsletter (2008-09)
- IGS Delhi Chapter Young Geotechnical Engineer Award, 2008.
- Staff Engineer Grade IV, Haley and Aldrich, Inc, Boston, Massachusetts (Jan 2007 - July 2007)
- Staff Engineer, Fugro West Inc, Oakland, California (July 2004 - Dec 2006)
- School of Engineering Fellowship at Stanford University, 2003-2004.
- 10 Research Assistant, IISc B'lore, Modeled Geocell reinforced sandbeds (FLAC)
- Sr. Project Engineer, Cengrs Geotechnica Pvt. Ltd., New Delhi, India (July 2007 - Present)

EDUCATION

- M.S., Civil and Environmental Engineering (Specialization in Geomechanics) Stanford University, California, U.S.A. (GPA: 3.9/4.0) - Sep'03- Jun'04
- B.Tech., Civil and Environmental Engineering Indian Institute of Technology (IIT), Delhi, India (GPA: 8.1/10.0) - Jul'99 - Apr'03



PAPERS / ARTICLES PUBLISHED

1. Ravi Sundaram, Sorabh Gupta (2014), "Identifying Defects in Large Diameter Bored Piles – Case Studies", Proceedings of DFI India Conference (September 19-20, 2014), Delhi Page 44
2. Ravi Sundaram, Sanjay Gupta, Sorabh Gupta (2014), "Building a University on Liquefiable Soils Using Dynamic Compaction", Proceedings of DFI Conference (September 19-20, 2014), Delhi, Page 67.
3. Sanjay Gupta, Ravi Sundaram, Sorabh Gupta (Dec'2012), "Building A Mega Power Plant On Liquefiable Sands – A Case Study", Proceedings of Indian Geotechnical Conference, Delhi, Page 428 to 431.
4. Sanjay Gupta, Ravi Sundaram, Sorabh Gupta (Dec'2012), "Quality Assurance for Deep Bored Piles–A Case Study", Proceedings of Indian Geotechnical Conference, Delhi, Page 608 to 611.
5. Sanjay Gupta, Ravi Sundaram, Sorabh Gupta (2011), "Geotechnical Characterization Of Soft Clays Of The Godavari Delta", Proceedings, Indian Geotechnical Conference (IGC-2011), Kochi, pp 166 to 169.
6. Sanjay Gupta, Ravi Sundaram, (2011), "Liquefaction Risk Mitigation for a Power Plant in the Indo-Gangetic Alluvium", Proceedings, The 14th Asian Regional Conference on Soil Mechanics and Geotechnical Engineering Hong Kong, China (May-2011), Page 306.
7. Sanjay Gupta, Ravi Sundaram, Sorabh Gupta (2010), "Dynamic Compaction to Mitigate Liquefaction Potential", Proceedings, Indian Geotechnical Conference (IGC-2010), Mumbai, Volume-II, pp 783-786.
8. Ravi Sundaram and Sanjay Gupta (2010), "Construction Foundations on Red Mud", Proceedings, 6th International Congress on Environmental Geotechnics, New Delhi, Volume-II, pp 1172-1175.
9. Gopal Ranjan, Ravi Sundaram and Sanjay Gupta (2009), "Performance of a Large Diameter Oil Storage Tank on Improved Clay Deposit", Proceedings, 17th International Conference on Soil Mechanics & Geotechnical Engineering (17th ICSMGE-2009), Alexandria, Egypt.
10. Sanjay Gupta, Ravi Sundaram, Sorabh Gupta and G.V. Ramana (2008), "Liquefaction Susceptibility Study at Commonwealth Games Village Delhi", Proceedings, Indian Geotechnical Conference (IGC-2008), Bangalore, Volume-II, pp 436-440.
11. Sorabh Gupta, Sanjay Gupta and Ravi Sundaram (2008), "Pump-out Tests in Alluvial Sands – A Case Study", Proceedings, 6th Asian Young Geotechnical Engineers Conference (AYGEC)-2008, Bangalore, pp 47-54.
12. Sanjay Gupta, Ravi Sundaram and Sorabh Gupta (2008), "Pile Integrity Testing for Monitoring Pile Construction", Proceedings, National Symposium on Geoenvironment, Geohazards, Geosynthetics and Ground Improvement-Experiences and Practices (4G) Indian Geotechnical Society (Delhi Chapter) pp 173-178.
13. Sanjay Gupta and Ravi Sundaram (2007), "Geotechnical Characterization of Dune Sands of the Thar Desert", Proceedings, 13th Asian Regional Conference on Soil Mechanics & Geotechnical Engineering (13th ARC-2007), Kolkata, Volume-I, pp 204-207.
14. Sanjay Gupta, Ravi Sundaram and Anurag Goyal (2006), "Dynamic Characteristics of Alluvial Deposits-A case Study", Proceedings, Geotechnical Engineering-Indian Experience (IGC-2006), Chennai, Volume-II, pp 827-830.
15. Sanjay Gupta and Ravi Sundaram (2005), (Key Note, Expert Lecture) "Mitigating Foundation Distress", Proceedings, Geotechnical Practices for Environmental Management, Disaster Mitigation and Foundation Engineering (IGC-2005), Ahmedabad, Volume-I, pp 95-102.
16. Sanjay Gupta, Ravi Sundaram and Pushpendra Singh (2005), "Deep Excavation Adjacent to a Multi-Storeyed Building Lateral Support", Proceedings, Geotechnical Practices for Environmental Management, Disaster Mitigation and Foundation Engineering (IGC-2005), Ahmedabad, Volume-II, pp 319-322.
17. Sanjay Gupta and Ravi Sundaram (2004), "Geotechnical Investigations : Dune Sands of the Thar Desert", Proceedings, Ground Engineering : Emerging Techniques (GREET) (IGC-2004), Warangal, Volume-II, pp 1-9.
18. Sanjay Gupta and Ravi Sundaram (2003), (Key Note Lecture) "In-situ Testing – Current Trends in Geotechnical Investigations", Proceedings, Geotechnical Engineering for Infrastructural Development (IGC-2003), Roorkee, Volume-II, pp 635-645.
19. Ravi Sundaram and Sanjay Gupta (2003), "Geotechnics of Artesian Flow – Case Study of River Shivganga, Nepal", Proceedings, 12th Asian Regional Conference on Soil Mechanics & Geotechnical Engineering (12th ARC-2003), Singapore, Volume-I, pp 603-606.
20. Ravi Sundaram and Sanjay Gupta (2003), "Foundation Stabilization of the Janmabhoomi Temple at Mangarh", Proceedings, Forensic Geotechnical Engineering Chennai, pp 168-172.
21. Ravi Sundaram and Sanjay Gupta (2001), "Use of Electrical Resistivity Tests for Geotechnical Investigation for Bridges", Journal of the Indian Roads Congress, Paper No.473, Volume 62(1), pp 115-131.
22. Ravi Sundaram and Sanjay Gupta (2001), "Correlating Borehole Data with Electrical Resistivity Test Results", Proceedings, Indian Geotechnical Conference (IGC-2001), Indore, pp 44-47.
23. Anurag Goyal and V.K. Sood (2001), "Risk on Estimation of Ultimate Loads of Fly-ash Fill by Model Tests", Proceedings, Indian Geotechnical Conference (IGC-2001), Indore, pp 175-177.
24. Sanjay Gupta and Ravi Sundaram (2001), "Behavior of Dune Sands of the Thar Desert Under Dynamic Loading", Proceedings, Fourth International Conference on Recent Advances in Geotechnical Earthquake Engineering and Soil Dynamics including Symposium in Honour of Professor W.D. Liam Finn, San Diego, California (USA), Volume II.
25. Gopal Ranjan, Ravi Sundaram and Sanjay Gupta (2000), "Geotechnical Design Criteria for Foundations of Large Diameter Tanks", Proceedings, Indian Geotechnical Conference, IGC-2000, Mumbai, pp 115-118.
26. Sanjay Gupta and Ravi Sundaram (2000), "Geotechnical Engineering Practice : Professionalism and The Law", Proceedings, Indian Geotechnical Conference, IGC-2000, Mumbai, pp 421-424.
27. Sanjay Gupta and Ravi Sundaram (2000), "Implementation of Highway Projects : Geotechnical Aspects", Proceedings, Seminar on Financing, Implementation and Operation of Highways in 21st Century, Indian Roads Congress, New Delhi, pp III-157-161.
28. Ravi Sundaram and Sanjay Gupta (2000), "Ensuring Reliability of Foundation Design Through Modern Geotechnical Investigation Techniques", Proceedings QUARS 2000, National Seminar on Quality Assurance and Reliability in Structures, Association of Consulting Civil Engineers (India), Coimbatore Centre.
29. Sanjay Gupta and Ravi Sundaram (1999), "Pile Foundations for Flyover (ROB) in Jaipur - Geotechnical Aspects", Proceedings Indian Geotechnical Conference - IGC - 99, Calcutta.
30. Gopal Ranjan, Sanjay Gupta and Ravi Sundaram (1999), "Foundations for Large Diameter Tanks : Case Studies", Journal of The Institution of Engineers (India), Volume 80, November, 1999, pp 101 - 104.



31. Sanjay Gupta and Ravi Sundaram (1998), "Deep Foundations Under Artesian Conditions", Proceedings, Indian Geotechnical Conference, IGC - 98, Delhi Vol.II, pp 133 - 140.
32. Ravi Sundaram, Sanjay Gupta & V.D. Miglani (1997), "Dynamic Response of Hard Clays of the Pir Panjal Trap", Proceedings, Indian Geotechnical Conference, IGC - 97, Baroda, pp 471 - 474.
33. Sanjay Gupta, Ravi Sundaram, T. Ramamurthy & S.N. Sinha (1997), "Cement Grouting in Delhi Silt - A Field Study", Proceedings, Indian Geotechnical Conference, IGC - 97, Baroda, pp 255 - 258.
34. Sanjay Gupta and Ravi Sundaram (1996), "Gravel Piles: Construction and Field Testing", Proceedings, Seminar on Piles, Indian Geotechnical Society, Delhi Chapter, pp 72-81.
35. Ravi Sundaram and Sanjay Gupta (1995), "Dynamic Characteristics of Collapsible Aeolian Sands", Proceedings, Indian Geotechnical Conference, IGC-95 Bangalore, pp 387-389.
36. Ravi Sundaram and Sanjay Gupta (1994), "Small Diameter Rammed Stone Columns in Fine Sands", Proceedings, Indian Geotechnical Conference, IGC-94 Warangal, pp 345-348.
37. This paper has been awarded the IGS-AG Dastidar Biennial Prize (1994 & 95) for the Best Paper on "Ground Improvement" published through the Indian Geotechnical Society.
38. "Standards on the Ground", Ground Engineering, U.K., January/February, 1994, pp-19. Article Published by British magazine highlighting the standards of excellence achieved by our company in India.
39. Sanjay Gupta and Ravi Sundaram (1994), "Pile Foundations Save Transmission Towers at Agra", Civil Engineering and Civil Construction Review, August, 1994, pp 45-46.
40. Sanjay Gupta (1993), "Geotechnical Investigation Reports their Contents and Interpretation", Proceedings, National Symposium on Geotechnical Investigation Reports, Madras, April, 1993 pp 13-17.
41. Sanjay Gupta and Ravi Sundaram (1992), "Recent Trends in Foundation Strengthening", Civil Engineering and Civil Construction Review, October, 1992, pp 31-33.
42. "Piles Load Test at Dadri leads to redesigning of Piles", (1988) in Civil Engineering and Construction Review, December 1988, NEWSCAN, pp 7, a news report on a 1350 tonne pile load test conducted on a 1.07m diameter pile at NCTPP Dadri (UP).
43. Ravi Sundaram and Niaz Ahmad (1986), "How Best Can One Estimate the Load Carrying Capacity of Piles Which Support Offshore Structures", Proceedings, Indian Geotechnical Conference, IGC-1986, Response Paper Vol.II, 183-186.
44. Sanjay Gupta (1986), "For which Soil Conditions are Under-Reamed Pile Foundations Superior to Other Foundation Systems", Proceedings, Indian Geotechnical Conference, IGC-1986, Synthesis Paper Vol.III pp 97-101.
45. Sanjay Gupta and Ravi Sundaram (1986), "For Which Soil Conditions are Under-Reamed Pile Foundations Superior to Other Foundation Systems", Proceedings, Indian Geotechnical Conference, IGC-1986, Response Paper Vol.II, pp 131-133.
46. Ravi Sundaram and S.J. Bari (1985), "Test Before you Build - Reasons Why it Pays", in Gulf Construction, July, 1985.
47. Ravi Sundaram and Steven C. Helfrich (1984), "Service that Pays 12 Times", in Gulf Construction, July, 1984.

LIST OF FIELD EQUIPMENTS – SOIL INVESTIGATION

S.No.	ITEM	MAKE / MODEL	QUANTITY
1.	Medium / Heavy duty percussion drilling winches mechanically operated, with 5 to 10 HP electric motor /diesel engine capable of boring and chiselling upto 75 M depth	Kirloskar Engine	25 Nos.
2.	Heavy Duty Rotary Diamond Core Drill Machine, Hydraulic feed, with all accessories capable of drilling through soil and rock to depth of 150 m.	Joy Voltas 12B/Vol.90 L&T 575	14 Nos. 1 No
3.	Light duty calyx drill machine with all accessories, capable of drilling soil and rock upto 50 m depth.	Mercury	1 No.
4.	Manual winches with tripod for investigation by shell and auger for borehole in soil, 150 to 200mm dia, and upto 15 m depth.	Manufactured to ISI Specifications	10 Nos.
5.	Dynamic Cone Penetration Test Equipment with all accessories.	Manufactured to ISI Specifications	10 Nos.
6.	Static Cone Penetration Test equipment, hydraulically operated with all accessories complete, capable of conducting test upto 30 m depth.		
	• 10 Tonne Capacity	HEICO	1 No.
	• 20 Tonne Capacity	HEICO	1 No.
7.	Menard's GA Pressuremeter for test in NX size boreholes having capacity upto pressure of 80 kg/sq.cm	AIMIL	1 Set
8.	Field Vane Shear Test equipments with all accessories, capable of conducting Vane Shear Test upto 20 m depth.	HEICO	1 No.
9.	Electrical Resistivity Testing Unit with 90 Volt battery pack.	Conin : EST-S	6 Nos.
10.	Field CBR Test		
	• As per IS 2720 Part 31	Continental Scientific	5 Nos.
	• As per TRL Specifications (UK)	Syndicate	
11.	Block Vibration Test equipment with all accessories.	HEICO	1 No.
12.	Plate Load test equipments with all accessories including girders, dial gauges, datum bars etc. for testing using 30, 45, 60, 75 and 100 cms square and circular plates	Manufactured to ISI Specifications	6 Nos.
13.	Load Frames for load testing of soils, piles etc.		
	• 300 Tonne Capacity	As per Cengrs Design	1 No.
	• 600 Tonne Capacity	As per Cengrs Design	1 No.
14.	Seismic Refraction Test Equipment	PASI (24 Channel)	1 No.
15.	Crosshole / Downhole Seismic test set-up	Olson Engg.Inc.	1 No.
16.	Parallel Seismic Test Set-up	Olson Engg.Inc.	1 No.
17.	LCN Testing equipment for testing airport pavements.	Continental Scientific Syndicate	1 No.
18.	Rapid Moisture Meter	Continental Scientific Syndicate	3 Nos.
19.	In-situ density by core cutter and sand replacement.	Continental Scientific Syndicate	3 Nos.



S.No.	ITEM	MAKE / MODEL	QUANTITY
20.	Hydraulic Jacks 10 T to 300 T Capacity.	Continental Scientific Syndicate HEICO	11 Nos. 6 Nos.
21.	Piezometer Installation Unit		1 No.
22.	Automatic SPT Trip Hammer.	Manufactured to international specifications	6 Nos.
23.	SPT samplers	Continental Scientific Syndicate	24 Nos.
24.	Casings	Manufactured to ISI Specifications	400 m
	• 150 mm nominal dia	Universal Engg. Works	300 m
	• NX	Asian Tubes	250 m
	• HX		
25.	Double Tube Core Barrels with reaming shells & coring bits for drilling through soil & rock (HX, NX, NWT)	Universal Engg. Works Vadilal Co. & others	25 Nos.
26.	Triple Tube core barrels with reaming shells and coring bits for drilling through rock (HMLC & NMLC)	Vadilal Co. & others	8 Nos.
27.	RR Bits and Pilot bits for rotary drilling through soil.	Vadilal/Universal Engg.	12 Nos.
28.	Water/ mud pumps for water Circulation, pressure testing etc.	Greaves Cotton GP6 Voltas Triplex Kirloskar SP 3L Kirloskar SP 4L	8 Nos. 4 Nos. 4 Nos. 4 Nos.
29.	Field Permeability Test with single and double packers, with all accessories, complete (NX & HX).	Vadilal Co.	4 Nos.
30.	Water Level Indicator (Dip Meter)	Geohydromechs	8 Nos.
31.	Thin Walled Tubes 65 mm ~ 100 mm dia	Continental Scientific Syndicate	1400 Nos.

LIST OF FIELD EQUIPMENTS – FOUNDATION CONSTRUCTION & TESTING

S.No.	ITEM	QUANTITY
1.	Bored Piling rig - heavy - duty, Power operation, with all accessories including chisel of upto 1.5 tonne weight for providing piles in all kinds of soil and soft rock - capable of providing piles of 400 to 1200 mm diameters and max. 40 m deep.	20 Sets
	• 1.5 Tonne Capacity	4 Nos.
	• 2.5 Tonne Capacity	6 Nos.
	• 3 Tonne Capacity	8 Nos.
	• 5 Tonne Capacity	2 Nos.
2.	Manual bored pile/under-reamed pile rigs for providing piles in soil - with all accessories including under-reamers, etc. capable of providing piles upto 50 c diameter and 9 m deep.	30 Sets
3.	Power winches for bored compaction piles with prime mover of 5 HP with all required accessories.	6 Nos.
4.	Concrete Mixers	15 Nos.
5.	Concrete Vibrators	8 Nos.
6.	Water Pumps	10 Nos.
7.	Bentonite Slurry Pumps for DMC Piling System	16 Nos.

S.No.	ITEM	QUANTITY
8.	Welding Sets	8 Nos.
9.	Pile load test set-up to conduct compressive, tensile and lateral load tests including hydraulic jacks (10 to 300 tonne capacity), pumps etc. with synchronized pumping units	6 Sets
10.	Reaction frame for pile load testing :	3 Sets
	• Capacity 600 Tonnes	1 Set
	• Capacity 300 Tonnes	1 Set
	• Capacity 150 Tonnes	1 Set
11.	Diesel Generators (5 KVA – 63 KVA)	1 No.
12.	Concrete Breaker for Pile Chipping :	3 Nos.
	• Hydraulically operated (Lifton Make)	1 No.
	• Electrically operated (Mico Bosch Make)	2 Nos.
13.	Concrete Cube Testing Machine	8 Nos.
14.	Weight Batchers	2 Nos.
15.	Mini Mobile concrete batching plant	1 No.
16.	Complete set for testing of concrete slump, aggregate grading, bulkage of sand.	4 Sets
17.	Pile Integrity Test (PIT) Equipment, Manufactured by Pile Dynamics Inc. (PDI), U.S.A	1 No.
18.	Pile Driving Analyzer (PDA), 8 Channel PAX, Manufactured by Pile Dynamics Inc. (PDI), U.S.A.	1 Unit
19.	Cross-hole Seismic Logging (CHUM) Test Equipment, Manufactured by Pile Dynamics Inc. (PDI), U.S.A.	1 Unit on arrangement basis

LIST OF LABORATORY EQUIPMENTS

FOR SOIL TESTING

S.No.	ITEM	MAKE / MODEL	QUANTITY
1.	Complete set of sieve from 40 mm to 75 micron size	Continental Scientific Syndicate	6 Sets
2.	Hydrometer	Continental Scientific Syndicate	6 Nos.
3.	Liquid and Plastic Limit Device	Continental Scientific Syndicate	3 Nos.
4.	Shrinkage Limit Apparatus	Continental Scientific Syndicate	13 Nos.
5.	Pycnometer & Specific Gravity Bottles	Continental Scientific Syndicate	10 Nos.
6.	Consolidometer	Continental Scientific Syndicate HEICO	4 Nos. 6 Nos.
7.	Constant & Falling Head Permeability	Continental Scientific Syndicate	4 Nos.
8.	Triaxial testing machine, 8 speed, motorized unit, 5 T capacity frame, with pore pressure measuring device, complete with all accessories for unconfined compression, UU, CU and CD Triaxial Tests.	HEICO	3 Nos.
9.	Triaxial testing machine, single speed motorized 2 T capacity frame, complete with all accessories for unconfined compression, UUT Triaxial tests and lab CBR tests.	HEICO	1 No.



S.No.	ITEM	MAKE / MODEL	QUANTITY
10.	Direct shear test machine, 12 speed, motorized unit for conducting UU and CD Direct Shear Test LCN Testing equipment for testing airport pavements.	Enkay Enterprises Continental Scientific Syndicate	1 No. 4 Nos.
11.	Laboratory Vane shear equipment, motorized.	Continental Scientific Syndicate	1 No.
12.	Laboratory California Bearing Ratio	Continental Scientific Syndicate	22 Nos.
13.	Standard Proctor Compaction Test	Continental Scientific Syndicate	3 Nos.
14.	Modified Proctor Compaction Test	Continental Scientific Syndicate	2 Nos.
15.	Relative Density Vibrating table with all accessories	HEICO	1 No.
16.	Automatic Compactor for laboratory Proctor and CBR tests	Manufactured to standard specifications	2 Nos.
17.	Compression Testing Machine of 100 Tonnes Capacity	Continental Scientific Syndicate	2 Nos.
18.	Compression Testing Machine of 30 Tonnes capacity	HEICO	1 No.
19.	Rock cutting machine with diamond blade for cutting, trimming and grinding rock cores.	HEICO	1 No.
20.	Point Load Strength Tester	HEICO	1 No.
21.	Swell Pressure Measuring Equipment	HEICO	2 Nos.
22.	Sample Extruder - • Hydraulic, hand operated • Hydraulic, motorized	Continental Scientific Syndicate HEICO	3 Nos. 1 No.
23.	Sample Trimmer, 38 mm dia and 60 mm dia samples with wire saw.	Continental Scientific Syndicate	1 No.
24.	Electronic Balance - • 100 kg capacity, sensitivity 0.5g • 30 kg capacity, sensitivity 5g • 10 kg capacity, sensitivity 1g • 1 kg capacity, sensitivity 1 mg	Austin Engg. Works Austin Engg. Works ISI Approved ISI Approved	1 No. 1 No. 3 Nos. 2 Nos.
25.	Electrical Balance for accurate weights, capacity 200 g, sensitivity 0.1 mg	Varbal Engg. Co.	2 Nos.
26.	Oven	Continental Scientific Syndicate	2 Nos.
27.	Chemicals, burettes, pipettes, conical flasks, beakers etc. with all required accessories for determining sulphate chloride, carbonate, bicarbonate contents, total salts, dissolved oxygen and organic content.	Continental Scientific Syndicate	4 Sets
28.	pH Meter	ELICO	2 Nos.
29.	Water Distillation Plant		1 No.
30.	All required accessories like spatulas, trays, vernier calipers, moisture cans, desiccators, glassware, etc.		

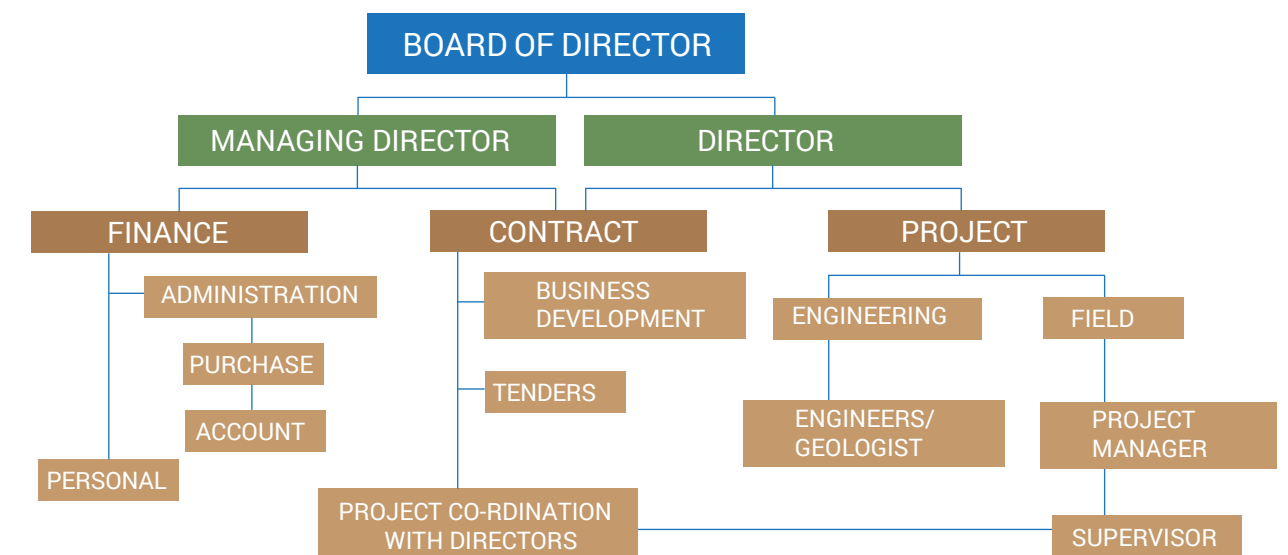
FOR ROCK TESTING

S.No.	ITEM	MAKE / MODEL	QUANTITY
1.	Compression Testing Machine of 100 Tonnes capacity	Continental Scientific Syndicate	3 Nos.
2.	Compression Testing Machine of 20 Tonnes capacity	HEICO	1 No.
3.	Rock cutting machine with diamond blade for cutting, trimming and grinding rock cores.	HEICO	1 No.
4.	Point Load Strength Tester	HEICO	1 No.

LIST OF EQUIPMENTS FOR TOPOGRAPHIC SURVEY WORKS

S.No.	ITEM	QUANTITY
1	GTS 225 Total Station (Topcon)	3 Nos.
2	GTS -235N Total Station (Topcon)	1 No.
3	Total Station Theodolite 605 L Leica	3 Nos.
4	Carl Zies Optical Theodolite	3 Nos.
5	Transit Theodolite having	6 Nos.
6	Auto Level ATG 6 (Topcon)	2 Nos.
7	Auto Level C310 (Sokkia)	1 No.
8	Auto Level Wild Leica NA 20	3 Nos.
9	Dumpy Level	8 Nos.
10	Plane Table Set	4 Nos.
11	Prismatic Compass	2 Nos.
12	Gramin eTrex®H Hand-held GPS Receiver	6 Nos.
13	Hand GPS (Trimbel & gramim E.V.HCx)	2 Nos.
14	Plotter A-0 Size	1 No.
15	NTS-362RL (SOUTH) Non Prism	1 No.
16	Computer Desktop & Acer Laptop with Latest Software	6 Nos.
17	Leica Disto (D3A)	1 No.

ORGANIZATION CHART



COMPANY PROFILE

CENGRS GEOTECHNICA PVT LTD.

Corporate office - A - 100, Sector - 63, Noida - 201309 (U.P)
Email : cengrs@gmail.com | Website : www.cengrs.com
Telephone : 91 (120) 4206771 | Fax : 91 (120) 4206775